

E-PAPER

COVERING STOCK MARKET AND
MODERN ECONOMICAL WAYS
COMPLEMENTARY COPY

THE 3rd year



ECONOMIC REVOLUTION

Web site : www.theeconomicrevolution.com
Email : theeconomicrevolution@yahoo.co.in

Everythings that's on Money !!!

• Vol. 3 • Issue : 52 • Date : 20-02-2011 to 26-02-2011 • Editor : Narendra Joshi • Mobile:9825065387 • Sub.Editor : Sharad Kotak •
• Address : 115/991, Nirmal Apartment, Telephone Exchange Road, Naranpura, Ahmedabad -380013 • Phone : 27451449 ••

A. Shivkumar

3

Elliott Wave Rules-4

Astromony guru

5

**Say no to speculation in
stock market**

Market Priview

12

**Index outlook: Ready for the
budget jamboree**

ONCE AGAIN, A BEARISH ENGULFING

**19/02/2011.
SHORT TERM
DOWNTREND
RESUMES.**

It was expected that

resistance zone created by the 61.8% retracement of the last fall and the 200dma i.e. 5560-5620. As expected

was a Bearish Engulfing pattern formed on the daily charts on the Nifty and as a result we can assume that the pull-back is almost as good as done. The downtrend has resumed once again. It is likely that the bottom created in the last fall around Sensex 17295 and Nifty 5177 might be tested again. In bear markets, the bottoms usually get breached and if that is the case here i.e. the bottom of 5177 for

Continue on7

Lion's Roar
Email : roar_lion@yahoo.com
SHAHENSHAH OF FINANCIAL JUNGLE



after such a steep fall, this resistance zone proved too much for the bulls to overcome. There

CAPITAL GOODS, BANKING / FINANCIALS, TELECOM SECTOR WILL BE GETTING ASTROLOGICAL SUPPORT

21st Feb – 25th Feb 2011 Aquarius. Ketu in Gemini. Saturn in Virgo. Jupiter & Uranus in Pisces.

ASTROLOGY & STOCK MARKET
SATISH GUPTA
<http://www.astrostoktips.in>
[e mail:astrostoktips@rediffmail.com](mailto:astrostoktips@rediffmail.com)
MOBILE :
09811738366 - 09810018438



week, Moon will be transiting in Virgo, Libra & Scorpio. Rahu, Venus & Pluto in Sagittarius. Sun, Mercury & Mars in Neptune in Aquarius. Venus will shift to Capricorn on 15th Feb 11. **We Have Been Issuing Caution For**

The Last 3 Months About Deception & Market Behavior.

With the change in planetary position on 12th Feb 2011, it was predicted about improvement of market sentiment with upward bias. As predicted markets witnessed cheerful atmosphere after a gap of 3 months & Nifty was up by 2.5%. Regarding our prediction about Banking / Financial sector, Bank Nifty surged by 1000 points in 4 trading sessions.

Planetary position suggests that

Continue on11

PROFITBOOKING STHE LAST 5 DAY RALLYKIMS GAINS FOR

Markets bounced was fast & furious for from 5175 support now markets will

5350 means we will test 5050 a close above 5620 mean we head towards 5950 moves will still be sharp on either direction the selling on friday is clearly showing that fast run up in last five days got corrected might still see 5400-5350 levells before we head further to 5950 levells if budget gives markets some surprise we will see 5950 any negative surprise will takes us down to 5200-5050 eventually will be seen

Continue on11

MARKET TREND



Ashuu kakkarr

**Tel : 099896 93320
099899 20987**

**Website : www.ashuukakkarr.com
Email ID : ashuu@ashuukakkarr.com /
info@ashuukakkarr.com**

zones and as expected consolidate in a range of and written the bounce 5350-5620 break below

Weekly Review for the Week 21st to 25th February 2011

**Nifty: (5559)
Sensex: (18212)
18.2.11**

We said 'Technically the market still looks weak and has displayed no signs of strength so far...the up move that was witnessed on Friday looked more like a short covering up move...and we could see some more short covering and that could propel the market to 5416-5560 levels, however we have a strong supports 5119'

The market has unfolded as expected and achieved our target of 5560 and profit booking set in and the market closed in the red on

the last day of the week. more profit booking and could slide down

Technically the towards 5300 levels...

WEEKLY REVIEW



**PRAKASH
GABA**

Tel : 093222-10907

CFT, MSTA (Londen)
A professional Technical Analyst and a Trader based in Bombay & Runs his own consultancy [http:// www.prakashgaba.com](http://www.prakashgaba.com)
Email:prakashgaba@hotmail.com

market has seen the reaction that was expected and the market looks under pressure and there is good chance that the market may see some however the market has a strong resistance at 5670 From a trading point of view I would book profits on the way up until 5670.

F&O Expiry and Budget Expectations to drive the markets this week ZIG-ZAG to continue

Fireworks for the week 21st FEB 2011 – 25th FEB 2011

M A R K E T OUTLOOK FOR THE WEEK

F&O Expiry and Budget Expectations to drive the markets this week.... ZIG-

week...
2. Government going to announce it Railway Budget on Thursday, 25-Feb and Union Budget on Monday, 28-Feb... So we may expect sector specific move

deposits... An overall expectation there from government on Social reform & infrastructural development spending to be increased...

4. On the other hand any unexpected increase in freight charges in railway budget for particular categories like steel, cement & iron ore may give bad hit for the markets & industries very badly... But let us hope it should not happen...

5. Last but not the least, CBI investigation are in fast way, if it continue the same way, we may hear many more 'biggies' involvement in the corruption related

To ensure - retain the Retailers and FII's interest on our Indian markets, we may expect FM to come out with reformed tax structure for

continue for a while... Second Reason, they lost their belief when they came to know "The Law-Makers became Law-Breakers here in India" –

of their holdings which were kept under margin by their brokers... Even though many corporate companies came out with good set of Q3 numbers; they had come

BUY & SELL

Ramesh Chandra

Mo. 098940 43090

CONTACT US FOR STOCK MARKET RECOMMENDATIONS

E-Mail: buysell_india@yahoo.com, buysell_stocktips@yahoo.com

ZAG to continue... Smart recovery seen by short covering and 2-3 days sustained buying from FII side... In coming week the following

ahead of this budget...
3. Capital Goods & Metals industry expects a hike in Import barrier also expect to retain current excise duty

WEEKLY TRADING PICKS (21st FEB - 25th FEB 2010)

SCRIP	CLOSE	SUPPORTS	RESISTANCES
ABGSHIP	360	352,343	369,378
ALBK	208	203,198	216,225
BHARTI	330	324,315	347,360
DLF	232	227,220	244,257
GODREJIND	168	166,163	177,186
HDFCBANK	2170	2153,2124	2210,2245
HINDALCO	209	206,203	221,226
HINDOILEXP	172	169,164	180,185
INDHOTEL	82	80,78.50	85,88
INFOSYSTCH	3096	3077,3044	3128,3159
ITC	156	154,151	161,168
LIC	191	185,180	198,205
PETRONET	113	112,109	117,122
PIRHEALTH	440	435,428	450,459
PUNJLLOYD	71	70,67.50	75,78
RANBAXY	502	497,490	518,527
RELIANCE	936	924,911	955,972
SAIL	158	155,152	168,171
SBIN	2760	2738,2719	2793,2814
SESAGOA	310	305,298	324,335
SIEMENS	845	836,827	853,868
STER	160	157,152	168,173
TATAMOTORS	1200	1188,1157	1225,1256
TATAPOWER	1264	1243,1216	1292,1329
TATASTEEL	638	634,627	651,662
TCS	1090	1080,1055	1132,1157
WIPRO	432	427,422	439,442

DELIVERY PICKS:

As we said earlier, one can start investing in the following stocks from its recent lows for a decent and minimum return of 30% and given easily achievable price targets for the same... Also one must remember that we are having a chance of downside about 4950-4870... Keeping all the above in mind one can utilize the fall to add more in these stocks...

Stocks recommended Last week with their immediate targets: ABG SHIP-YARD (390), AJMERA REALTY (195), AMARAJA BATTERIES (203), BOMBAY DYEING (378), HIND DORR (105), GEI INDUSTRIES (200), KALPATARU POWER (162), KIRLOSKAR PNEUMATIC (500) & NAVIN FLUORINE (320)...

Follow-up: Last week some of the above recommended stocks had given good short term gain when we compare them from their 11-Feb-2011 closing... ABGSHIP (Made 375 from 331), AJMERA REALTY ((Made 194 from 167), Bombay Dyeing (Made 370 from 297), GEI Industries (Made 201 from 165), KIRLOASKAR PNEUMATIC (Made 418 from 380) & NAVIN FLUORINE (Made 269 from 247)... Still one can invest in any of the above on every dips for quicker & better returns...

In addition to the above, they may concentrate in the following stocks for good gain in short to medium term... In brackets we mentioned last closing price & our expected immediate target price...

ANANTRAJIND (75-90), DEEPIND (60-90), GULFOIL(80-100), NOIDATOLL (27-36), SELMCL (20-30), SML IZUZU (360-420) & TITAGARH WAGON LTD (415-500)...

factors are going to drive markets:
1. FII's to be net seller from the beginning of year 2011, if it continues then market will dive towards south after the breathing rally seen in last

structure... Auto industry also expects to retain current excise duty structure... Banking & Financial sector expect government to leverage the duration of tax exempted term-

issues & CBI may take them into their custody – which may put pressure on ruling government... So whole world is keep monitoring India, in which way it is going to handle all these issues...

markets (such as reduction in STT), or he may change the current capital gain structure...

NEAR TERM M A R K E T OUTLOOK

FII Selling: FII's continued to be net seller so far in this year 2011 for two reasons... Primary reason for FII's pulling out their investments from here is the strong economic recovery in U.S (We had given alert about this in our Diwali Special Article 2010 itself)... We expect it to

When Many Politician's & Govt. Higher Official's names were screened in Leading Scams & briberies...

Margin Call from Brokers: We had seen a solid sell off in top rated stocks also – even after they had come out with good set of Q3 numbers... In addition many leading stocks went for a nose dive after CBI had probed them in the recent scam... Because of the above two major reasons traders were forced to sell

out with caution note that they could not retain the same earnings in coming quarters, because of higher input costs, increase in interest rates, increase in raw material & fuel prices... Although we expect the upcoming Budget to be a populist one, but we expect a increase in freight charges for particular categories in railway budget that too going to impact marginally on major

Continue on8

Elliott Wave Rules-4

Flat Rules:
A Flat is a three wave pattern labeled A-B-C that moves generally sideways. It is corrective and counter-trend and is a very common Elliott pattern.

Wave A can be any corrective

points of Wave B. Although there is no minimum time constraint for Wave B, it must be less than 10 times Wave A.

Wave C must be an Impulse or Ending Diagonal.

Wave C must share some common

back failures. Wave C must be no more than 10 times either Waves A or B in price and time.

There is no minimum time constrains for Wave A.

Flat Guidelines: Wave A is usually

price. The time taken by Wave B is generally between 61.8% and 161.8% of Wave A.

Wave C is rarely

Wave C often ends at point which is a percent of Wave A beyond end of Wave A equal to the same percentage

Wave C normally reaches to the end of Wave A

Wave C is not often more than 140% of the longer of Wave A or B.

If Wave C is longer than Wave B, then Wave C is often about 61.8% of A beyond end of A.

If Wave C is longer than Wave B, then Wave C is often about 161.8% of Wave A from end of Wave B by price.

The time taken by Wave C is generally between 61.8% of Wave 1 to 161.8% of the shortest of Waves A and B.

Previous week prediction

Nifty previous week suggestion : 5310-First support for the target 5373-5414 is 5074-5050, First resistance for the target 5650-5675 is 5525-5550. Bears controlled market. No long term buying.

an Ending Diagonal. Wave C is often about the same length as both Wave A and B.

away from the start of Wave A. Wave C usually retraces a minimum of 100% of Wave B.

A. Sivakumar,
M.Sc., PGDCA
(M) 9600488136
e-mail : tipssbsense_er@yahoo.co.in
<http://www.tipssbsense.blogspot.com>

pattern except a Triangle.

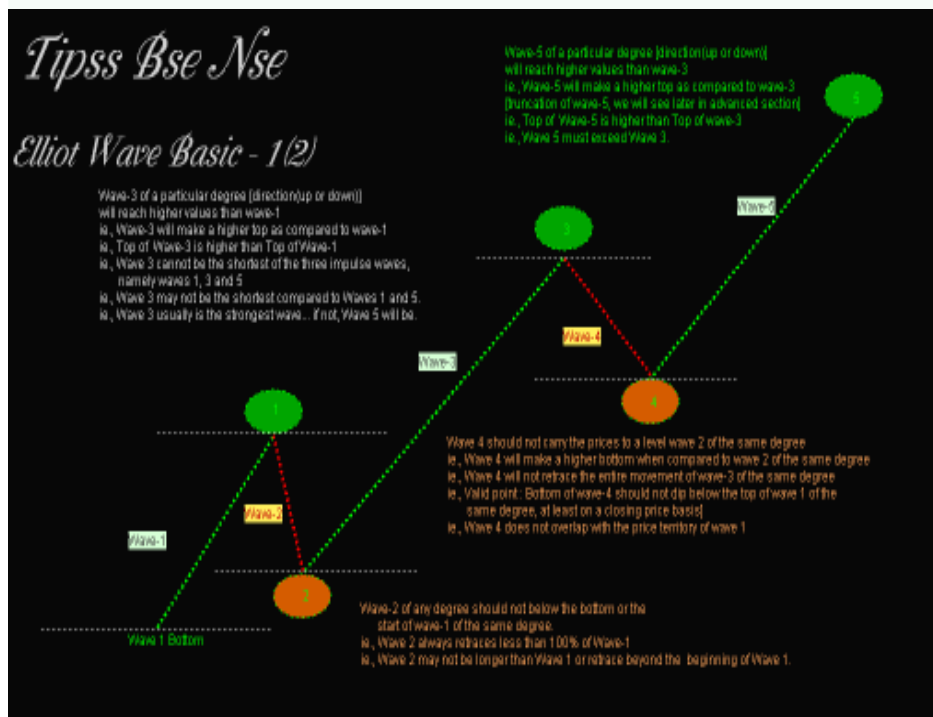
Wave B can be

price territory with Wave A.

Wave C must be

a Zigzag family pattern.

Wave A is rarely



any corrective pattern except a Triangle.

less than twice the longest of Waves A and B, including

an Expanding Triangle.

The largest Wave within Wave A is usually less than Wave A by price.

Wave B is usually a Zigzag family pattern.

Wave B is rarely a Flat.

Wave B is usually greater than 95% of Wave A by price.

Wave B is usually less than 140% of Wave A by price.

The largest Wave within B is usually less than Wave A by

2G Scam shadow on market ,CBI Summons more Corporate Leader Now..Budget will decide Market mood..

The markets broke their five-day winning streak amid political uncertainties surrounding the widening probe into the 2G scam, impending weekend and resistance around the crucial 5600 levels on the Nifty. Watch Next week very crucial for entire Market. Buy IT Stocks Dip in small Quantity. In the Budget FDI in Retail Sector on card.. Buy Pantaloon Retail & Brandhouse.

RAJESH KOTHARI
(M) 09892145335
CRACKERS

FOR ACCURATE STOCK MARKET PREDICTIONS
<http://www.astrostocktips.in>
TEL NO
9810018438- 9810056543

Wave B must retrace more than 70% of Wave A.

Wave B is less than twice the price movement of Wave A, including internal

internal points of Wave C.

Wave C must be less the three times the price distance of Wave A.

Disallow back to

Scripts Name	CURRENT PRICE	SL	TGT 1	TGT 2
DISH TV	BUY 59	56	63	68
RBN	BUY 65	62	72	75
RELIANCE	BUY 938	930	950	965
SBIN	BUY 2772	2750	2805	2840
JPASSOCIATES	SELL 85	90	80	75
ONGC	SELL 268	275	250	240
SAIL	BUY 160	165	155	150
JSW STEEL	SELL 882	890	870	850
HLL	BUY 273	270	280	287
ITC	BUY 156	152	160	165

SHORT TERM MOVEMENT DEPEND ON INTERNAL FACTORS IN INDIAN STOCK MARKET

Strong Sign From Global Market, Pre Budget Rally Before Coming Near Inner Some Factors And Buying From FII So Pre Budget Rally Touch Looked In Indian Stock Market At Last Week Where SENSEX Touched 18000

Long Term Investors Started To Invest And Make A Good Profit In Just Short Term. We Knew That By Our Readers Contact. End Of Week SENSEX Create A Format Of Symmetrical Triangle In Up Trend Who Gives A Sign Of Bullish Trend To Last Its

(5458.95)
NIFTY Create On Monthly Chart A Format Of Rectangle Triangle In Down Trend Who Gives A Sign Of 218 Points Bullish Trend In March Series If NIFTY Close It's One Main Resistance. If NIFTY Break It's One Main Support So Selling Will Be At Every High.

Technical Chart (CNX NIFTY)

Last Week We Said Don't Stand In Bearish Trend If NIFTY Give Close It's One Main Resistance Means 5375 Same That NIFTY Has Been 225 Points Up With 5600 Bullish Trend To

NILKAMALO (BSE CODE 5223385) (285.15)

Located At Mumbai (Maharastra) And The Company Set Up By Vrujlal Parekh Family In 1985. Company Concerted With Chair, Table And Cabinet Including In Materials Handling Crets, Containers, Bins And Module Furnishing Business. Like The Company Produced And Selling Also. Company Also Concerted In Custom Maudling, Main OEM Suppliers Clients, Mega Home Retailer Chain And Hospitality Service Product. The

Plan In Dadra Nagar Haveli And One Is In Pondechery. Shree Vaman Rav Parekh Is Comapany's Recent Chairmen When Sharad Parekh Is MD. Using In Hospitality Business

2010. Who Was Rs 6.10 Cr Net Profit And Rs 87.71 Cr Operating Profit On Selling Rs 890.74 Cr In March 2009.

TECHNICALL CHART



ROCKING TIPS MAKERS
ASHISH K NAYAK
(PM): 93769 88765 (P):02761 315944
Rosenayak.1984@yahoo.com

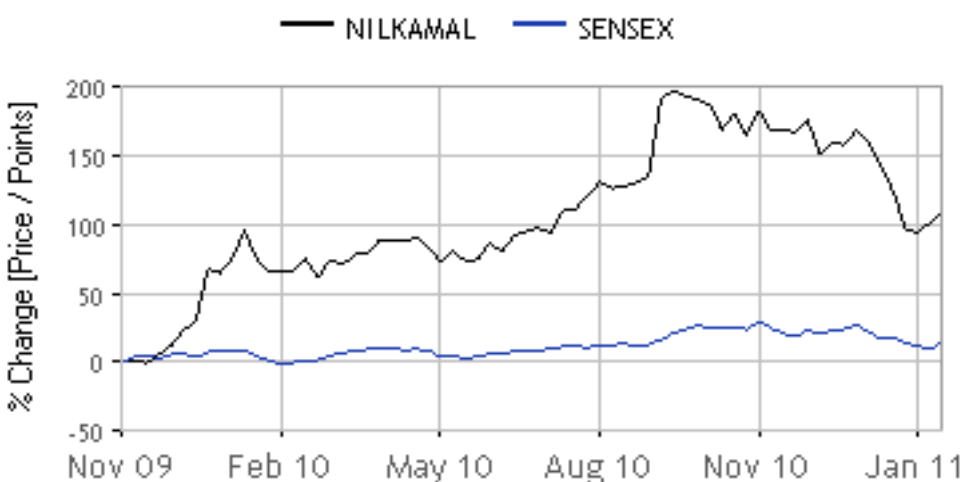


Things Like Injection Maudling, Rotation **(NILKAMAL)**

Psychological Level One Main Support. If Easily. Last Week We SENSEX Break It's



Cross 5375. Weekly Chart Create Symmetrical Triangle In Up Trend Format Who Gives A Sign Of Bullish Trend It's One Definite Support. If NIFTY Give Close In Support Level So Re Again Will Show Old Bearish Trend Level. Next Time It's Advisable For Investors Be

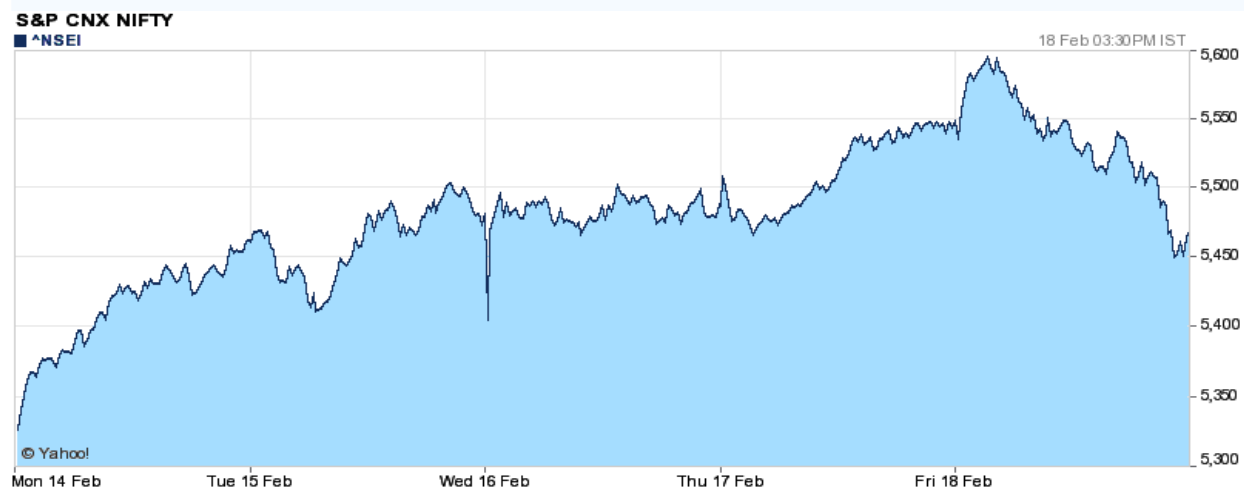


Said Clearly That Don't Stand In Bearish Trend If Support And Give Close In It So Selling Will Be At Ware To Watch Some Inner Factors Than

Company Product You Can See Everywhere India's No 1 Branded Company And Turnover Is Rs 500 Cr More.

Maudling, Vacuum Formatting, Polythin Injection And Blow Maudling Produced By Different Machinery. Our Regular Readers Know That Very Well We Recommended This Stock At Around Rs 230 Who Given 91 % Bumper Return With Rs 441 Bullish Trend In Yearly. The Stock Recent Book Value Is Rs 208.53 When Face Value Is rs 10/-. Stock Recent PE Ratio Is 9.41 % Who Is Below From Industrial PE Ratio 11.64. Company Shows 32.06 % EPS For Current. The Company Gives 50 % Above Dividend Also. Company Quarterly Result Are Medium When Yearly Result Are Like This Rs 47.24 Cr Net Profit And Rs 121.89 Cr Operating Profit On Selling Rs 1031.95 Cr In March

End Of Week And Monthly Chart Create A Format Of Rising Wedge In Down Trend Who Gives A Sign Of Bullish Trend From Main Near Support For Middle Term. Weekly Chart Create A Format Of Symmetrical Triangle In Up Trend Format Who Gives A Sign Of Bullish Trend To Cross Its One Main Resistance. Long Term Chart Create Bull Flag In Up Trend Format Who Gives A Sign Of Accidental Bullish Trend To Cross Its One Main Resistance. Researching Technical Level On Yearly Chart The Stock Can Show 25 % Above Bullish Trend To Cross Its One Main Resistance. Long Term Investors Can Make Investment In Limited Quantity At Declines.



SENSEX Cross It's One Main Resistance Means 18057 And Same That 625 Points Bullish Trend Has Been After SENSEX Crossed 18057. By Our Last Week Head Line

Every High. Next Week Having February Future Series Expiry So Market Can Start With Volatility.
N I F T Y TECHNICALS

Invest.
MEDIUM TO LONG TERM ROCKING CALL

Company Have A Seven Big Plants In Country Like Samba (J&K), Greater Noida (U.P), Bajura Sindar (Nasik), And Silvasa When Company Have A Two

Say no to speculation in stock market

As per Col Ajay about unrest in Middle Ceo of East positive movement in Silver Eight week year 2011 and weakness in crude oil previous week represented by Saturn and year 2011 is once again proved represented by Rahu. correct. All

you sudden upward movement was seen in Indian stock market. I

You can watch my regular TV show at Zee business at 07.15 is and Blombergutv at 07.48 am Money to Friday for stock and commodities.

ASTROMONEY GURU



**COL.
AJAY**
Mo.

**09414056705,
09314196555**

www.astromoneyguru.com



received hundred of e mails for thanks for correct market directions.

Now this week going to be very important for Indian economy due to budget. Please go through I shall update about 2 days well in advance at my web site astromoneyguru.com.

Now as per astro economics this week upward movement expected in fertilizer, banking, educations, health care stocks. Investors may keep eyes on Rcf, NFL, Eaducomp, Titagargh wagon for short term trading. Timely profit booking also recommended for short term traders. Ifci, NHPC, Lic hosing finance are also recommended for 90 days investment. This week may be most beneficial for Mesh and Tula Rashi while mesh and varshik need to alert in big volume trading. For Mesh Rashi coral is most luck stone and most favourable dates are 9, 18 and 27 of every month. If Tuesday also fall on these date these dates are quite capable to give wonderful result. But check your horoscope before going for big risk.

Right now sun and mars are making conjunction in kumbh rashi. While Jupiter is in Meen rashi. Venus and Rahu are in Dhanu rashi. Combination of these planets may create upward movement in stock and commodities. My advance predictions recommended stocks were also proved correct. Please check all Business Tv chaneel and market expert were with same view about stock market to see further down. I told you boldly to invest on banking, fertilizer and metal stocks. Result is with

**NOW SOME PAGES OF THE ECONOMIC REVOLUTION
IS AVAILABLE ON MONDAY ON THIS WEB AND
WHOLE ISSUE WILL BE AVAILABLE ON TUESDAY ONLY.
IF YOU WANT WHOLE ISSUE ON MONDAY EARLY
MORNING IN YOUR E MAIL**

**SUBSCRIPRION
ONLY RS.1000**

PER YEAR, WITH THIS ISSUE GET GUJARATI VERSION FREE

BULLET

Narendra Naynani
(M) 9898162770
nainaninarendra@hotmail.com
www.narendranainani.blogspot.com



VALUE BUYING EMERGES AT LOWER LEVELS

BSE Sensex (18211.52) and Nifty (5458.95) closed up 2.7% and 2.8% respectively last week. Nifty Future February was quoting at 8.05 points premium. Nifty call option February 5500 was very active. Support for Sensex is at 17800. Resistance for Sensex is at 18650. Support for Nifty is at 5330 and resistance at 5590.

Railway budget will be presented on 25th February 2011 and Union Budget will be presented on 28th February 2011.

SBI and ICICI Bank added Open Interest in February series. Huge position was built up at Tata Motors February Call Option Strike Price 1250. Good build up was also seen at SBI February Call Option Strike Price 2800.

Strategy for Futures Option players.

1) Cipla (307.30) Lot Size-1000 Shares

Buy One Call Option of February Strike Price 300.00 @ 9.05 Rs
Sell One Call Option of February Strike Price 320.00 @ 1.30 Rs.

Premium Paid = 9.05 * 1000 = 9050.00 Rs.
Premium Received = 1.30 * 1000 = 1300.00 Rs.
Net Premium Paid = 9050.00 - 1300.00 = 7750.00 Rs.
Maximum Profit = 320.00 - 300.00 = 20 * 1000 = 20000.00 - 7750.00 = 12250.00 Rs.

Maximum Loss = 7750.00 Rs.
Break Even Price = 307.75

2) BHEL (2099) Future-Lot Size 125 shares.

Buy One Lot February Future @ 2099.00 Rs
Sell One Call Option of February Strike Price 2150 @ 12.00 Rs.

Premium Received = 12.00 * 125 = 1500.00 Rs
Maximum Profit = 2150.00 - 2099.00 = 51 * 125 = 6375.00 + 1500.00 = 7875.00 Rs.
Max Loss = Unlimited.

Trading Idea

1) Jindal Steel (680) Buy this stock in decline and trade.

2) Tata Chem (329) Buy this stock in decline and trade

TREND OF MAJOR STOCKS

STOCK	TREND	NO OF DAYS	Weekly Trend	Monthly Trend
BHEL.NS	Bullish	2	Rising	Flat!
ICICIBANK.NS	Bearish	1	Rising	Flat!
INFOSYSTC.NS	Neutral	1	Falling	Flat!
ITC.NS	Neutral	1	Falling	Flat!
MARUTI.NS	Bullish	6	Rising	Flat!
SBIN.NS	Bullish	6	Rising	Flat!
TATASTEEL.NS	Bullish	5	Rising	Flat!
TCS.NS	Neutral	1	Falling	Flat!

Technical indicators of major Stocks

MFI=Money Flow Index * RSI=Relative Strength Index

ADX=Directional Momentum Index

STOCK	CLOSE	MFI-21	RSI-14	ADX-14
BHEL.NS	2102	55.11	43.99	40.13
ICICIBANK.NS	1030	49.13	49.96	21.34
INFOSYSTC.NS	3100	36.97	43.36	27.52
ITC.NS	156	25.3	38.97	33.48
MARUTI.NS	1229	30.71	45.48	39.62
SBIN.NS	2772.5	58.18	58.76	16.99
TATASTEEL.NS	640	44.93	52.01	17.6
TCS.NS	1092.05	20.73	39.93	24

Budget to decide trend and strength of 5300

Nifty - weekly close Budget will decide range.
5459 (5310) - Market breakout from 5300 - 5600

open strong and remain positive for next three days. After hitting 5600 mark profit booking started to close on Friday in negative. Week closes with gain of 150 points. As per our One two ka four formula, with immediate top of 5600, 1%, 2%, 4% stoploss are at 5550, 5500 and 5400. So last stoploss for long term is 5400. Below that our yearly stoploss 5280 is major support.



DINESH ARVIN PAWAR (THAKUR)
M. NO.
09822050949

<http://dinuthakur.blogspot.com>

dinuthakur@gmail.com

blog site -

<http://dinuthakur.blogspot.com>

NIFTY SUTRA

Now out of our 15 different hints for nifty to Trader and Investor, 11 are bearish. Only 6 NIFTY stocks are trading positive just above their mid term supports. 31 NIFTY Stocks are above long term support 500 DMA. Reader can see Intraday, EOD technical chart of Nifty and nse/bse stocks on Mobile on my site.

Short term Trend and reversal levels for NIFTY stocks are as follows - use it for entry/exit in two steps.

STOCK	Trend	Trend Reversal	STOCK	Trend	Trend Reversal
ACC	DOWN*	1030,1040	LT	DOWN*	1700,1800
Ambuja Cem	DOWN*	125,130	Mah & Mah	DOWN*	670,720
Axis Bank	DOWN*	1330,1350	Maruti	DOWN*	1310,1320
Bajaj Auto	DOWN*	1360,1420	NTPC	DOWN-	190,195
Bharti Airtel	DOWN-	335,338	ONGC	DOWN-	300,310
BHEL	DOWN-	2200,2300	PNB	DOWN*	1130,1150
BPCL	DOWN*	630,670	Power Grid	DOWN-	98,99
Cairn	DOWN*	325,330	Ranbaxy	DOWN*	510,550
Cipla	DOWN*	335,340	RCom	DOWN-	120,130
DLF	DOWN-	250,290	Reliance	DOWN-	980,1010
Dr. Reddy	DOWN*	1640,1650	RIL Capital	DOWN-	520,620
GAIL	DOWN*	470,480	RIL Infra	DOWN-	670,730
HCL Tech	UP*	450, 390	RPower	DOWN-	135,150
HDFC	DOWN*	650,680	SAIL	DOWN-	170,185
HDFC Bank	UP*	2160,2140	SBIN	UP*	2760,2660
Hero	DOWN-	1780,1800	Sesa Goa	DOWN*	320,330
Hindalco	DOWN*	230,220	Siemens	UP*	830,820
HUL	DOWN*	280,295	Sterlite	DOWN-	170,175
ICICI Bank	DOWN*	1050,1090	Sun Pharma	DOWN*	440,450
IDFC	DOWN-	150,170	Suzlon	DOWN-	51,52
Infosys Tech	DOWN*	3160,3240	Tata Motors	DOWN*	1210,1220
ITC	DOWN*	160,165	Tata Power	DOWN-	1290,1300
Jindal S&P	DOWN*	680,690	Tata Steel	UP*	630,590
JPAssociate	DOWN-	90,105	TCS	UP*	1070,940
Kotak Bank	DOWN-	410,420	Wipro	DOWN*	450,460

* stock above 500 Daily moving avg

For Next week - This week market trading range will be between 5130 - 5730, i.e. trend point of 5430 (add/cut 25% of weekly gain/loss to update trend point during week), and weekly range with +/- 300. 20, 50, 100, 200 days EMA levels for Nifty are at 5500(-0), 5560(-20), 5720(-30), 5620(-10). Traders to exit their long position at respective trigger levels in fall. Re-enter trade again later at trigger or lower level. Thus Trigger helped us to protect, maximize profit and hold position. NIFTY trend and its beginning as per 20 SMA line direction on different charts are as follows:- 30 minute - flat, 5500; 90 minute - flat, 5500; Daily - DOWN, 6000; Weekly - DOWN, 5900.

Dinu's SAR - Trend and Stop-loss Table for Nifty -

Investor	Chart type	trade Beta type	Trend %	From	Stop loss	Gain
Derivative	Daily	20 (+1.2)	DOWN	5530	5480*	+70
Swing trade	Weekly	20 (1-1.2)	DOWN	5500	5470*	+40
Short term	Bi-weekly	20 (1)	DOWN	6060	5530*	+600
Medium term	Monthly	20 (1-0.8)	DOWN	6000	5650*	+540
Mutual Fund	Quarterly	10 (-0.8)	DOWN	5850	5710*	+390
Long Term	Yearly	10 (-0.8)	Neutral	3670	5280/5740**	+2000

(Daily stop-loss + close)/ 2 will give trader next day's stop-loss and trend for NIFTY. Traders to exit below trigger** and re-enter trend at trigger** or lower level. Reverse trend, if market trades against stop loss for 30 min.*

Lion's Roar

Cont. from Pg. 1

the Nifty gets taken out, then we may possibly head towards next support zone of 4777-4842. **TECHNICALLY** a gain of **148** points on a weekly basis. **Price Analysis** suggests that since the prices continue to form lower tops and higher levels. **Trend Analysis** suggests that since the prices continue to form lower tops and find lower support zones. Hence if we consider the medium term rise from 13219-21108 for the Sensex and 3918 to 6338 of its strength. One interesting aspect of Directional Indicators is that +DI has cut -DI from below on Friday and

INDEX LEVELS :

	S3	S2	S1	CLOSE	R1	R2	R3
Nifty	5079	5210	5348	5458	5567	5690	5824
Sensex	16943	17395	17819	18211	18564	18954	19342

4842. **TECHNICALLY** a gain of **148** points on a weekly basis. **Price Analysis** suggests that since the prices continue to form lower tops and higher levels. **Trend Analysis** suggests that since the prices continue to form lower tops and find lower support zones. Hence if we consider the medium term rise from 13219-21108 for the Sensex and 3918 to 6338 of its strength. One interesting aspect of Directional Indicators is that +DI has cut -DI from below on Friday and

LAST WEEK'S RECOMMENDATIONS

Once again we hit Bull's eye as all the targets were achieved with ease. The star performers for the week were Hind Oil Exp (up by 10%) and Jindal South-West (up by 13%).

STOCK	Rec. price	Tgt	Reached	Lot size	Profit
Buy BajajAuto	1255	1319	1362	125	Rs.13,375
Buy Sintex	161	169	170	1000	Rs.9,000
Buy OBC	333	344	354	500	Rs.10,500
Buy HindOil	167	184	184	1000	Rs.17,000
Buy JindalSW	942	1017	1065	125	Rs.15,375
Total					Rs.65,250

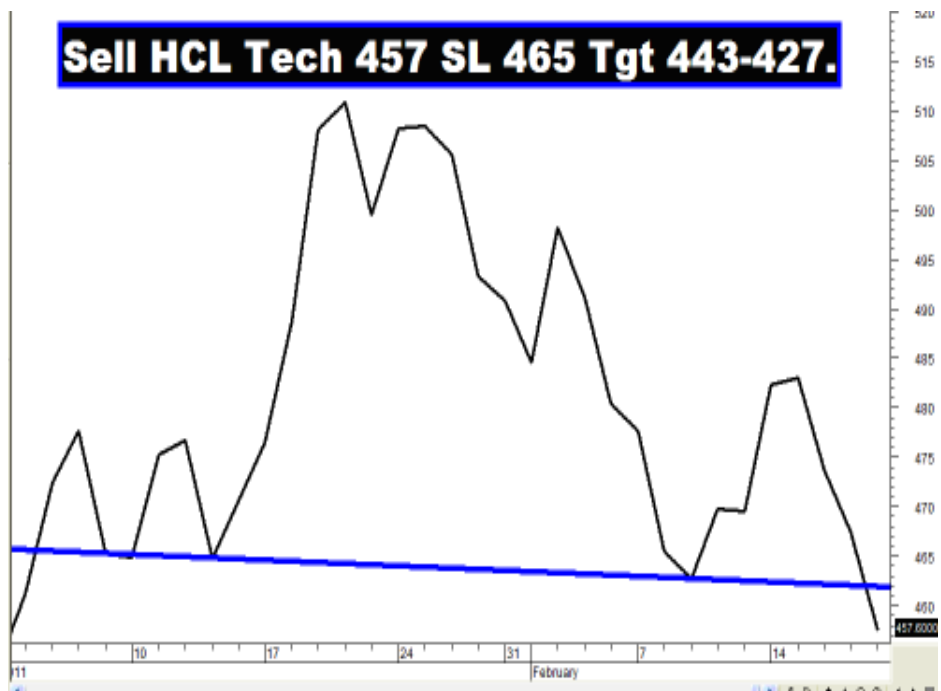
SPEAKING. Both the indices have shooting star. But it is not

THIS WEEK'S RECOMMENDATIONS :

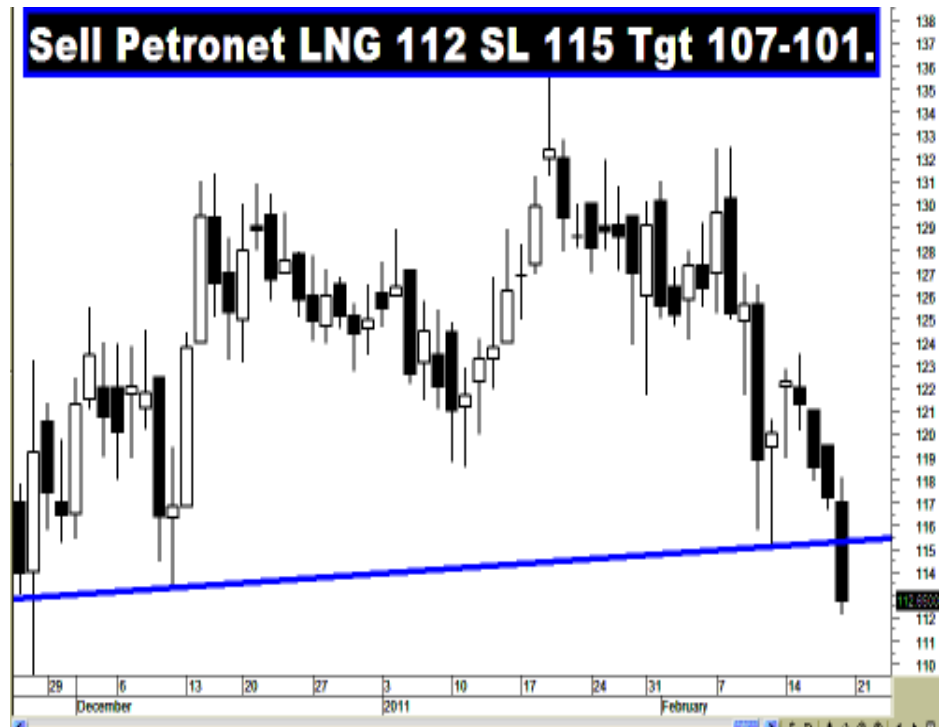
STOCK	CMP	SL	Tgt-1	Tgt-2
Sell HCLTech	457	465	443	427
Sell PFC	243	247	235	227
Sell Pet.LNG	112	115	107	101
Sell Patni	456	462	442	427
Sell DLF	232	237	223	214

The Sensex opened the week at **17940**, made a high of **18690**, a low of **17857** and closed the week at **18211**. The Sensex gained **483** points on a weekly basis. Similarly formed a **Bearish Engulfing pattern** on the daily charts on Friday a shooting star, as there is no gap between the bodies and also there is a small lower shadow in the Sensex. The long upper shadow is a result of selling

WATCH OUT FOR



Nifty opened the week term trend has turned pressure witnessed at



lower bottoms, both the medium and long term trend continue to be down. **Moving Average Analysis** too suggests that the trends in all time frames continue to be down. Market is below the 200dma (Sensex - 18776 and Nifty - 5636) and as a result the **long term trend is down**. This week the market tested the 20dma on Thursday and Friday but finally **closed the week just below the 20dma** (Sensex - 18259 and Nifty - 5472) and as a result the short term trend continues to be down. **The medium term trend continues to be down** as the market is well below the 50dma (Sensex - 19148 and Nifty - 5737). Both the indices tested the resistance zone formed by a cluster of Fibonacci retracement levels and the 200dma. The market failed to cross that resistance zone by forming a **Bearish Engulfing pattern** near that resistance zone, thus marking the end of the short term uptrend. It is likely that the indices will retest the bottom made last week i.e. Sensex 17295 and Nifty 5177. In Bear markets, the bottoms are normally breached and if that happens then we have to find lower support zones. Hence if we consider the medium term rise from 13219-21108 for the Sensex and 3918 to 6338 of its strength. One interesting aspect of Directional Indicators is that +DI has cut -DI from below on Friday and has signaled a Buy. The Bollinger Band which was in Sell mode for the past 4 weeks had its stop-loss triggered, as the prices managed a close above the 20dma on Thursday. But the prices closed below that level on Friday. Currently Bollinger Band is not giving any Buy or Sell signal. The O.I. PCR has increased to 1.05. Strong Call build up is seen at 5500 strike. For the next month series, there is good open interest position visible for **5200 PE and 5600 CE**. This suggests that 5200 on the downside and 5600 on the upside should act as support and resistance respectively. The Trendline Resistance for the Sensex is at **18873**. The Trendline Support is at **17338**. The Trendline Resistance for the Nifty is at **5653**. The Trendline Support is at **5191**. For the week ahead, Sensex will find Support at 17819-17395-16943 and will find Resistance at 18564-18954-19342. For the week ahead, Nifty will find Support at 5348-5210-5079 and will find Resistance at 5567-5690-5824.

Buy & Sell

Cont. from Pg. 1

industries like steels & cements...

Ring Master RBI: The ring master RBI is closely monitoring the Fiscal deficit, higher inflation... RBI has already hinted in the last policy review itself that it could further tighten their policy measures to keep fiscal deficit & inflation under control...

Cornered Congress Government... In "DO OR DIE" Situation...

Now everyone looking for how the Congress Lead government is to handle the following situations – Most of them like playing with double edged knife...

1. Govt. freed petrol prices, which resulted in higher input cost – slow down in sales for many industries... In addition increase in food prices also not allows bringing down inflation rate... When these are being like living creatures, we couldn't understand how they forecasting an increase in GDP growth higher than 8.50% in coming year...

2. Even thought Central Govt. agreed for JPC enquiry on Spectrum issue, the opposite political parties and Supreme court also urging to find the root of the corruption (not only 2G Spectrum – SC warned & questioned the Govt.'s handling on Adarsh issue, CWG issue and on Congress Govt.'s stand unaccounted funds dumped in

foreign banks... If the government not able to provide proper solutions to the above critical issues, it is highly doubtful whether they could run the Budget Session successfully or not...

3. When seeing many of the top officials and ministers names were involved in all the above corruptions (Not only its alliance party persons – Media spells out suspected names of own party leaders also), how its going to tackle opposite parties and supreme court... If Congress Govt. takes serious steps to retain its goodwill – it is similar to cutting the bottom of a tree, when they themselves sitting on the top of the tree... If they don't take any serious steps, that will not allow Congress & its alliances to succeed in upcoming state elections in Tamilnadu, Kerala, Pondichery, West Bengal and in Assam...

4. Last not the least, A Government can retain goodwill of public, industries and goodwill of Foreign Investors, only if they succeed to maintain good corporate governance and the resulted good corporate profits... We must realize the fact, Only One can win in this kind of markets, is the one who invests into the stocks which is having strong fundamentals with good technical support (When everyone are cries about

how they could keep fiscal deficit under control... Already they couldn't control the higher inflation rate mainly by the increase in fuel & food prices (mainly because of political pressure – political compromises)...

5. Now Congress Government will realize the power of Mahatma Gandhiji's Great Words "DO OR DIE"... While considering above factors, we can come to a conclusion that Congress Government is now in DO OR DIE situation... Either they have to **DO** some (good) thing to survive **OR** it can't survive – **DIE** - if they don't do anything good... Govt. must realize that they are about to raise funds about Rs.80000 crore by divestments – It will be successful only if market sentiment is good at that time – for that they must retain FII's confidence on Indian markets... So we believe our Government will do something better at least from now...

Even though markets are Sentimental Driven – A Proven Fact is there - Strong Fundamentals & Technicals will give Long Life...

We must realize the fact, Only One can win in this kind of markets, is the one who invests into the stocks which is having strong fundamentals with good technical support (When everyone are cries about

crash & shouts that no more upside in markets) ... Technically we see some more correction possible to a maximum level of 4950-4870 levels in Nifty... Same time it is advisable one must start investing 25% of his total investment when market breaches its recent lows (Near 5200 Levels)... When considering all the above factors from the beginning of this article and by comparing them with previous histories & current micro-macro economical conditions one can go for 100% risk-free investment when the above said levels are breached for a minimum and decent gain about 30% in short span...

SENSEX 18211 TECHNICAL VIEW (Week 21.02.11 – 25.02.11):

This week **18253 & 18063** will act as "KEY LEVELS" – if it maintains above 18253 or maintains below 18063 levels will decide the trend of market in next week...

SUPPORTS: 18063, 17879, 17708 & 17595...

RESISTANCES: 18253, 18464, 18671 & 18788...

SENSEX FOR THE DAY 21.02.11:

Today, if SENSEX maintains above **18162** will give upside target of 18464-18545 levels... Or else it may slide up to 17955 - 17879 levels...

SUPPORTS: 18162, 18063, 17955 & 17879...

RESISTANCES: 18253, 18360,

18464 & 18545...
NIFTY 5459 TECHNICAL VIEW (Week 21.02.11 – 25.02.11):

This week **5472 & 5414** will act as "KEY LEVELS" – if it maintains above 5472 or maintains below 5414 levels will decide the trend of market in this week...

SUPPORTS: 5414, 5355, 5307 & 5274...

RESISTANCES: 5472, 5535, 5595 & 5634...

NIFTY FOR THE DAY 21.02.11:

Today, if NIFTY maintains above **5445** levels – then it will give upside target of 5535 - 5553 levels... Otherwise it may slide up to 5382-5355 levels...

SUPPORTS: 5445, 5414, 5382 & 5355...

RESISTANCES: 5472, 5504, 5535 & 5553...

OUR LATEST MEGA HIT CALLS (14-Feb to 18-Feb)

1. STBT SELL HINDALCO FUT @ 212 (11.02.2011) BOOKED @ 204 (14.02.2011)... Made a gain of Rs.16000 per lot...
2. BTST BUY BOMDYEING FUT @ 295 (11.02.2011) BOOKED @ 320 (14.02.2011)... Made a gain of Rs.12500 per lot...
3. BUY INDHOTEL FUT @ 83 AND BOOKED @ 86 (14.02.2011)... Made a gain of Rs.6000 per lot...
4. 1-2 DAYS BUY CANBK FUT @ 556 (14.02.2011) BOOKED @ 585 (15.02.2011)... Made a gain of Rs.14500 per lot...
5. BTST ABAN FUT @ 582 (14.02.2011) MADE TOP @ 599 (15.02.2011)... Gain Rs.4250 per Lot...
6. BEARISH STRATEGY: SHORT BHEL FUT @ 2100 & BOUGHT 2100CE @ 28 (15.02.2011)... BOOKED BHEL FUT @ 2051 & COVERED 2100CE @ 24 (15.02.2011)... Made Net Gain of Rs.5625 per lot...
7. 1-2 DAYS SELL BATAINDIA FUT @ 339 (14.02.2011) BOOKED @ 326 (16.02.2011)... Made a gain of Rs.13000 per lot...
8. BUY LIC FUT @ 186 AND BOOKED @ 195 (15.02.2011)... Made a gain of Rs.11250 per lot...
9. BUY ONGC FUT @ 282 AND BOOKED @ 287 (15.02.2011)... Made a gain of Rs.2500 per lot...
10. INTRA+BTST BUY GAIL FUT @ 455 (15.02.2011) BOOKED @ 461 (16.02.2011)... Made a gain of Rs.3000 per lot...
11. INTRA+BTST BUY IOC FUT @ 333 (15.02.2011) BOOKED @ 337 (16.02.2011)... Made a gain of Rs.2000 per lot...
12. SELL CROMPTON FUT @ 267 AND BOOKED @ 262 (16.02.2011)... Made a gain of Rs.5000 per lot...
13. BEARISH STRATEGY: SHORT RCOM FUT @ 102 & BOUGHT 100CE @ 5 (16.02.2011)... BOOKED 50% RCOM FUT @ 94 & COVERED 100CE @ 2.50 (18.02.2011)... Made Net Gain of Rs.11000 per lot...
14. 1-2 DAYS SELL RELMEDIA FUT @ 159 (16.02.2011) BOOKED @ 140 (18.02.2011)... Made a gain of Rs.19000 per lot...
15. INTRA+BTST DCB FUT @ 45.50 (17.02.2011) BOOKED @ 48 (18.02.2011)... Made a gain of Rs.10000 per lot...
16. POSITIONAL BUY PIRHEALTH FUT @ 430 (17.02.2011) BOOKED 50% @ 449 (18.02.2011)... Made a gain of Rs.9500 per lot...
17. SELL NIFTY FUT @ 5590 AND BOOKED 75% @ 5460 (18.02.2011)... Made a gain of Rs.6500 per lot...
18. SELL SUNTV FUT @ 411 AND BOOKED 50% @ 403 (18.02.2011)... Made a gain of Rs.4000 per lot...
19. SELL SRTRANSFIN FUT @ 757 AND BOOKED 50% @ 745 (18.02.2011)... Made a gain of Rs.6000 per lot...
20. SELL LIC FUT @ 199 AND BOOKED 50% @ 191 (18.02.2011)... Made a gain of Rs.10000 per lot...
21. SELL RELCAPITAL FUT @ 470 AND BOOKED 50% @ 435 (18.02.2011)... Made a gain of Rs.17500 per lot...

Above 5517 we may see 5553,5594,5628

Below 5380,we may see 5336,5300,5260...

Last week when nifty future had given a close of 5317...we had clearly told in clear cut words & very boldly that, above 5445 we may see 5513,5580... what happened?? Nifty future had touched a high of 5589 & achieved our all target given

want from our recommendations in a single week???.... Just calculate % of profits per lot in a week..... Join our paid services to get this information on your mobile through SMS before everyone gets it...

From last week's our delivery based

Join our paid services to get this information on your mobile through SMS before everyone gets it...

Nifty Future :

Above 5517 we may see 5553,5594,5628....Below 5380,we may see 5336,5300,5260....We may see Upside in all scripts mentioned as Central Budget is only one week to go....Readers may please, Trade On Breakout side only according to own financial capacity & at risk & on your own decision.

Hot Positional

Stock Futures:

1) Maruti (1222.20): Rs. 1182 stoploss...It may touch 1265 to 1305..
2) BHEL (2090.35): Rs. 2061 stoploss...It may touch 2140 to 2170..
3) Cipla (307.30):



from 5317....

From Last week's our stock future recommendations, DLF moved to 251 from our reco price 244(Rs.7 Up), Welcorp moved to 188

recommendations, Shri Ganesh moved to 184 from our reco price 163(Rs.21 Up),Delta Corp moved to 75 from our reco price 66(Rs.9 Up),REI Agro moved to

ATTENTION

The material contained in the Economic Revolution is based on Fundamental and Technical analysis & other scientific methods and also the knowledge and belief of author. Error can not to be ruled out. The information given is of advisory nature only. The Editor, the Publisher and the Author does not take any consequences arising out of it. All rights reserved. Reproducing to whole or in part of any matter including features without permission is not permitted. Legal jurisdiction is Ahmedabad only.

The material given in the Economic Revolution is the views of author only, it not means that Editor is agree with it, so Editor, the Publisher and the printer is not responsible for the contains in writers article.

Narendra Joshi Editor,

from our reco price 173(Rs.15 Up),ONGC moved to 286 from our reco price 277(Rs,9 Up),Reliance moved to 965 from our reco price 914(Rs.51 Up), Reli Infra moved to 655 from our reco price 617(Rs.38 Up), Maruti moved to 1249 from our reco price 1182(Rs.67 Up),Sesagoa moved to 317 from our reco price 295(Rs.22 Up),MRPL moved to 66 from our reco price 61(Rs.5 Up),Educomp moved to 517 from our reco price 438(Rs.79 Up), Financial Tech moved to 861 from our reco price 766(Rs.95 Up).....What else u all

29 from our reco price 25(Rs.4 Up),Vijaya Bank moved to 86 from our reco price 80(Rs.6 Up),Praj moved to 74 from our reco price 66(Rs.8 Up),S Kumar moved to 69 from our reco price 62(Rs. 7 Up),Chambal Ferti moved to 77 from our reco price 70(Rs.7 Up),IDFC moved to 150 from our reco price 135(Rs.15 Up) & GMR Infra moved to 42.70 from our reco price 37.80(Rs.5 Up)... What else u all want from our recommendations in a single week???.... Just calculate % of profits per 1000 shares bought in delivery in a week.....

Rs. 300 stoploss..It may touch 315 to 323...

4) Jindal Steel (677.55): Rs. 660 stoploss..It may touch 695 to 720..

5) S e s a g o a (310.55): Rs. 297 stoploss...It may touch 322 to 338..

Hot Weekly

Stock Futures:

1) W e l c o r p (183.60): Rs. 173 stoploss... It may touch 194 to 207..

2) DLF (232.55): Rs. 226 stoploss.. It may touch 246 to 260...

3) ABAN (572.65): Rs. 545 stoploss...It may touch 594 to 613..

Continue on11

HOT CAKE

As Central Budget is only one week to go...We may see upside in scripts given below in expectation of getting good benefits & announcements in Central Budget....

Hot Delivery based Short term Investment :

- 1) S Kumar (514304) (63.70): Above 69, With upmove it may touch to 86...
- 2) Chambal Ferti (500085) (72.40): Above 79, Near term it may touch 86 to 93...
- 3) IDFC (532659) (143.50): Above 150, Near term it may touch 155 to 160 with upmove..
- 4) GMR Infra (532754) (40.05): Above 43, Near term it may touch 50 to 54...
- 5) LITL (532778) (38.70): Above 42, Near term it may touch 50 to 55..
- 6) Astra Micro (532794) (41.15): Above 44, it may give solid upmove from 50 to 57..
- 7) MRPL (500109) (60.95): Above 65, Near term it may touch 72 to 82...
- 8) SELMCL (532886) (20.35): Above 23, Near term, it may touch 27 to 32...
- 9) Naga. Ferti (500075) (27.75): Above 31, Strong upmove from 34 to 37 in near term..
- 10) Edelweiss (532922) (38.00): Above 41, In short time it may touch 45 to 50..
- 11) India Glycol (500201) (116.00): Above 124, In short time it may touch 131 to 144..
- 12) Ageegold (512289) (114.65): Above 125, In short time it may touch 135 to 147..
- 13) Balasore (513142) (22.55): Above 24, In short time it may touch 28 to 32..
- 14) Sterlite (500900) (160.30): Above 167, In short time it may touch 171 to 181..
- 15) Shri Ashtavinayak (532793) (6.92): Above 9, In short time it may touch 11 to 14..
- 16) Vijaya Bank (532401) (82): Above 87, In short time it may touch 92 to 98..
- 17) RCom (532712) (93.15): Above 97, In short time it may touch 104 to 113..Rs. 88 SL...
- 18) R Power (532939) (113.80): In short time it may touch 124 to 131..Rs. 105 SL...
- 19) Reli Infra (500390) (605.60): In short time it may touch 630 to 653 & 680..
- 20) Essar Oil (500134) (106.45): In short time it may touch 115 to 126..
- 21) Shri Rayalseema (507753) (10.14): Above 13, In short time it may touch 16 to 19..
- 22) SPSL (533110) (7.66): In short time it may touch 10 to 12 & 14..
- 23) NTPC (532555) (178.50): Above 182, In short time it may touch 185 to 190..
- 24) LIC (500253) (192.45): In short time it may touch 198 to 207..
- 25) Suzlon (532667) (47.70): In short time it may touch 52 to 54..
- 26) JP Power (532627) (39.70): In short time it may touch 45 to 52..
- 27) Great Off (532786) (267.20): Above 287, In short time it may touch 302 to 333..
- 28) HCC (500185) (35.60): Above 38, In short time it may touch 44 to 50..
- 29) Guj NRE (512579) (47.20): In short time it may touch 55 to 63..
- 30) Sturdy (530611) (5.02): In short time it may touch 7 to 9..
- 31) Caprihans (507486) (65): Above 72, In short time it may touch 81 to 93..
- 32) Assam Co (500024) (15.55): Above 17, In short time it may touch 20 to 23..

Email: smilestarterforu@gmail.com , parasghelani@rediffmail.com,

Yahoo ID: smile_starter_for_u_1

Disclaimer: This Is For Educational Purpose & Author's Personal View. Take Investment Decision At Your End.



Sanjay Lad (Mumbai)
 Web : www.stockacademy.co.in
 Mobil No. : 09820920530

Nifty Sup. 5200

SENSEX SUPPORT-- 17945/17674
RESISTANCE 18362/18579

NIFTY VIEW

Nifty has support at 5350 resistance at 5570. Market is weak with respect to weekly chart. Trader can go for short selling with stop loss of 5580 if it close below 5420 in any of week day it may show new low of 5100.

Some stocks for buy on decline

STOCKS	SUP.	S.L	TARGET
BRFL	235	225	270
CORPROTEC	290	275	330
FORTIS	144	138	165
JINDALSAW	204	195	230
NALCO	400	390	430
POLARIS	180	170	200
TV18	76	73	90

SOME STOCKS FOR SHORT SELLING

STOCKS	SUP.	S.L	TARGET
ABAN	585	590	550
ACC	990	1000	950
BAJAJHLDG	755	765	700
BGREENERGY	520	530	480
BIOCON	340	345	300
CENTRALBK	158	162	145
GODREJIND	170	175	160

On daily chart nifty created out-side bar pattern which means bears become stronger and bulls liquidate long position

After 5 days rally nifty come down 1.67% on Friday, we can not assume this is normal pull back after 5 days

rally ,below are some key observation On daily chart nifty created out-side bar pattern which means bears become stronger and bulls liquidate long position

PANIK AND PROFIT

NISHESH JANI
 Mo. +91 9227067662
www.janibrothers.com



In the last 5 days when nifty was rising volume in the last 6 trading session means

SENSEX ---- (SUPPORT--17945/17674 - - - - RESISTANCE--18362/18579)

Technically sensex looking sideways for coming days. The next major Resistance level of sensex is 18579. Target and Stop loss for clients only.

NIFTY ---- (SUPPORT--5398/5267 - - - - RESISTANCE--5545/5637)

Technically Nifty is also looking sideways for coming days. The next major Strong Resistance in the nifty is above 5637 mark. Nifty future Target and Stop loss for clients only.

GRASIM LIMITED (SUPPORT--2135---- RESISTANCE--2431)---BUY

Stock looking strong Technically. Indicators showing good up move for next few days. Traders can Buy cash and future for short term. Target and Stop loss only for Clients.

SAIL LIMITED (SUPPORT--142--- RESISTANCE--179)----BUY

Stock is looking great volume was constantly deckling so this rally was supported by short covering and not by long position and on Friday when nifty come down which was highest

to buy for short term traders and investors. Traders can Buy cash and future. Target and Stop loss only for Clients.

SHORT TERM TRADING CALL S T R O N G T E C H N I C A L BREAKOUT -- KEEP STOPLOSS ALSO

sell securities based on the information in this column are solely responsible for their actions and profit or loss. It is only the outlook of the markets and stocks with reference to its previous performance. You are advised to take your position with your

Trade With The Trend

ABHISHEK JAIN
 Email- Investment_guru1@yahoo.com
www.stocksidea.com
 Mo. 09826041144

BUY---- (BSE CODE-- 503663)

TILAK FINANCE LIMITED

Disclaimer: These calls are based on the technical analysis and personal observations and are not recommendations to any person to buy or sell any securities. We dont consider fundamental values of any scrip in this newsletter. Readers of this column who buy or

sense and judgment and with strict stoploss. we send our Articles to different news providers and we dont gurantee of accurate printing of the article, there maybe misprinting and misreporting in the article. Stock market is highly unpredictable and demand and supply affects it. And author won't be liable or responsible for any legal or financial losses made by anyone.

bulls exit and bears created short aggressively 5798 Option traders

On the daily chart FORCE INDEX has given sell signal which means this fall is supported by sellers

On the hourly chart nifty is making rounding top formation and the length is 130 point and according to this target will be 5340-5330.

In the last 5 days when market was rising on the 14-02-2011 it was open with gap and still this gap is not fill so logically this gap will be filled sooner

If the nifty cross 5600 levels then bulls will take up to 5750-



should be on cautious note as volatility will be high and value of option will change vary fast and chances are losing amount on any side

Disclaimer : While due care has been taken in preparing the above Analysis, no responsibility can be or is assumed for any consequences resulting out of acting on it.

Market trend

One has to be a trader for now lot of scams and negative news is bad for domestic equity markets can drive investors away. On daily charts bankex & nifty are overbought so more selling could come

action will be stocks specific.

1. short tatamotors 1205 sl 1250 ta 11150-1115
2. short maruti 1228.7 sl 1260 ta 1175-11140

Cont. from Pg. 1

3. short axis 1296.6 sl 1350 ta 1238-1210

4. short bob 900 sl 940 ta 840

5. short tcs 1089 sl 1130 ta 1040

Wall Street

which excludes food and energy prices - rose 0.2% month-to-month, compared to an expected increase of 0.1%.

The Producer Price Index (PPI), a measure of wholesale inflation, which came out on Wednesday rose 0.8% in January, which was also larger than expected. The PPI is rising at a faster pace than the CPI, indicating that companies aren't passing on the cost of raw materials to consumers.

The World Bank said in its latest report on the global food crisis that its price index jumped 15% between last October and last month, hovering just below its 2008 peak. Wheat, corn, sugar, fats and oils have led the price increases.

Meanwhile, the government's weekly report on the number of people filing for jobless benefits jumped to 410,000 for the week ended Feb. 12, which was close to expectations. The report was expected to show an uptick to 408,000, from 383,000 in the previous week.

The preliminary Philadelphia Fed index, a regional reading on

manufacturing, surged to 35.9 in February from 19.3 in January. The index was forecast to rise modestly to 21. The Conference Board's index of leading indicators climbed in January for the seventh consecutive month, rising 0.1% after advancing 0.8% in December. Shares of Nvidia Corp. gained 9.8% a day after the chipmaker offered an upbeat revenue outlook. On the other end, NetApp Inc. shares declined 6.4% after the data-storage company projected less-than-expected profit. Redbox is planning a subscription movie streaming service to compete with Netflix, according to news reports. Shares of Coinstar, Redbox's parent company, gained nearly 8%.

Shares of Timberland surged 30% after the outdoor goods maker logged a jump in fourth-quarter profit that widely beat economists' expectations. Weight Watchers International also reported a solid quarter, posting earnings per share that blew past expectations. Shares of the weight loss company soared

Cont. from Pg. 14

more than 45%. The better-than-expected earnings also benefited NutriSystem, with shares of the company rising more than 6%. Shares of Dr. Pepper Snapple Group rose 6% after the soft drink company reported an 11% jump in earnings per share.

The company's net sales rose to more than \$1.4 billion. Shares of Williams Partners -- a company focused on natural gas transportation, processing and storage - jumped 8% after the company said it would hike its dividend and split into two entities. The company also raised its guidance for 2011-2012. The stock price for Cliffs Natural Resources climbed more than 7% after the company reported that it doubled its full-year revenue to \$4.7 billion. In Bahrain, protests spread, with at least four people reportedly killed in fighting between protestors and police. The violence in Bahrain came along with reports that Iran had asked Egypt to allow two warships to use the Suez Canal to reach the Mediterranean Sea for training exercises.

Eagle's Eye

4) Hind Oil (172.25): Rs. 162 stoploss.... It may touch 185 to 203...

5) Unitech (34.25): Rs. 30 stoploss..It may touch 39 to 45..

Hot Delivery based Short term Investment :

1) Shri Ganesh (533180) (173.05): Above 185, it may touch 208 to 223...

2) REI Agro (532106) (27.55):

Above 30, it may touch 32 to 34 in near term...

3) RBN (533143) (64.75): Above 73, it may touch 81 to 93 in near term...

4) Super Spinning (521180) (12.48): Near term it may touch 17 to 23 with upmove..

5) HOCL (500449) (33): Near term it may touch 37 to 43...

6) HDIL (532873) (147.60): Near term it may touch 154 to

Cont. from Pg. 9

161...Rs. 140 stoploss...

7) Alok (521070) (22.45): Near term it may give solid upmove from 25 to 28..

8) Karuturi (531687) (16.25): Near term it may touch 19 to 23... 9) Usher Agro (532765) (93.50): Near term it may touch 100 to 108...

10) Hind Copper (513599) (324.40): Strong upmove from 374 to 406 in near term..

Pranav Mukharjee

individual economies regardless of their size or their current rate of growth. In this context I would like to reiterate my Prime Minister's suggestion at the Seoul Summit that a way must be found of channelling global savings to regions where huge investments are required for development and infrastructure.

The position of India in this regard is that it did not (and does not) contribute either to the buildup, or to the persistence of global imbalances. Nor does it contribute to the volatility that we have been witnessing in several of the international markets, including commodity markets. According to latest estimates, the Indian economy is estimated to have grown by 8.6% in 2010-11 and the Indian growth story remains robust.

Cont. from Pg. 13

A large emerging economy like India is vulnerable to seasonal factors and their effect on the food prices. As a result of vagaries of weather, India has witnessed a high and unsustainable inflation on the food items. The food inflation has also been accentuated by structural changes in the consumption pattern thanks to our growth. Such high food inflation has a tendency to feed into general inflation throwing challenges at our macroeconomic management. The high and persisting international prices of food commodities do not give us room for comfort in tackling food inflation in India.

We are also fortunate that the current phase of growth has been more or less evenly balanced between consumption and investment on the one hand, and between

domestic demand and external demand on the other. Nevertheless, we have our share of concerns arising from elevated commodity and asset prices, and economic problems of a more structural nature that underlie the uncertainties in the global economy.

Some of these uncertainties also derive from the aggressive macroeconomic policy response to the global crisis itself. Despite the two-speed global recovery, we live in a world which is becoming more integrated rather than decoupled. Any sustainable recovery must necessarily be

global, where trade and capital will need to flow in a stable manner and where benefits accrue across the board by creating employment and well being without destroying livelihoods.

Astrology & Stock market

Cont. from Pg. 1

disturbing news flow will continue

Looking to the planetary configuration, stock market would remain vibrant with upward bias & following sectors will be getting Astrological Support:

Capital Goods: Siemens, Alstom Projects, Abb, Cummins & Bhel ect
Banking / Financials: Icici, Lic Hsg, Hdfc, Hdfc Bank ect

Telecom sector will also be getting Astro support - buy Bharti & Idea on every decline.

LAST WEEK'S PREDICTION: As predicted, all three sectors - Banking & Financial, Oil Drilling & Auto out performed. Banking was the star performer & ALLHABAD BANK, SBI, PNB, IOB, AXIS, DCB, YES BANK & CITY UNION moved up by 10-20%. DEWAN HSG. GURUH FINANCE, LIC HSG & CANFIN HOME by 9-

20%. BANK NIFTY UP BY 1000 POINTS IN 4 TRADING SESSIONS. In AUTO - TATA MOTOR went up by 13%. TITAN went up by 6%. AMONG OIL DRILLING - ABAN, DOLPHIN, GUJRAT GAS & SELAN EXPLORATION ALSO OUT PERFORMED.

Sectors which get strong ASTRO support are not normally affected by downfall in the market.

BE EXTRA CAUTIOUS

New Samvat 2067 (Hindu New Year) have started from 16th march 2010. Whenever New Samvat starts, based on planetary position / conjunction & aspect among planets, some new sectors commence out performing & many sectors, which were in momentum during last samvat start under performing.

It has been observed many times that investors /

traders (not knowing this fact) keep investing / trading in such sectors, (whose astrological support is over) - resulting in losses.

For example, SUGAR stocks (which were predicted by us 19 months back) have been in down trend after the New Samvat started, whereas Nifty is making new 130 weeks high. Similarly, despite all possible support & great future plans / huge investments by government in INFRASTRUCTURE, substantial orders, excellent results - this sector is under performing during current samvat.

It is advised to be extra cautious every year, when new samvat starts & consult your financial astrologer before taking any investment/ trading decisions about sectors.

Index outlook: Ready for the budget jamboree

Equity market's victory march to celebrate the end of Mubarak regime in Egypt sent the Sensex spurring 500 points higher on Monday. Bargain hunting and short-covering did the rest to give investors some respite from the sea of red that was suffusing trading screens over the past few weeks. But the mood turned sombre once more on

shorting on rallies. Relatively lower open interest around 1,50,000 crore however means that many traders have not yet returned after getting singed in the recent correction.

The week ahead would offer some edge-of-the-seat excitement with the February derivative series expiring on Thursday, the Railway Budget and Economic

is mitigated slightly by last week's rally, the index needs to progress a little further to make the short-term trend positive.

Conversely, the monthly oscillators are moving down from bullish zone and are poised in the neutral zone, on the verge of moving in to negative zone. In other words, the upcoming weeks will be important in determining the long-term trajectory of the market. Sustained reversal from these levels will mean that the structural uptrend remains intact whereas decline below these levels will usher in a period of protracted correction. If the February candle on monthly chart turns out to be a hammer or a piercing pattern, it will be a positive.

The Sensex recorded the intra-week high of 18,690 that is just short of our medium-term trend decided at 18,700. This

significance of this resistance.

Inability to move above this resistance zone between 18,700 and 18,800 in the days ahead will keep the short-term outlook under a cloud. But move above 18,800 can take the index to 19,400 or 19,650 in the days ahead.

We are approaching one of those events, when market is at its whimsical best. Many a time major long-term turning points occur around the budget day. Investors would do well to stay away from the temptation to speculate on the forthcoming budgetary proposals or to take unduly large trading exposure ahead of the budget.

Short-term supports for the index are at 18,157, 17,827 and 17,436. If the index manages to hold above the first support, it can rally to 19,000 or 19,540 in the days ahead.

Nifty (5,458.9)

The Nifty (5,458.9) went on to the intra-week peak of 5,600 before turning tail on Friday.

As indicated in our last column, the area around 5,650 is the medium-term trend decider for this index since it occurs at 38.2 per cent retracement of the decline from the 6,338 peak.

Presence of the 200-DMA at 5,633 also adds to the significance of this level.

As long as the Nifty trades below this level, the short-term is likely to be choppy. But an emphatic close above 5,650 will take the index to 5,836 or 5,914 over the ensuing weeks. Near-term supports for the index are at 5,440, 5,350 and then 5,198. If the

index manages to hold above the first support, it will imply the propensity to move to 5,688 or even 5,840 in the days ahead.

Global cues

in reserve requirement on Friday. CBOE Volatility Index moved in a very narrow range between 15 and 17 last week reflecting the optimistic



MARKET PRVIEW
RAJESH KOTHARI
 MO. NO. 09892145335

Friday as the spectre of 2G scam reappeared to yank stock prices lower.

Volumes were brisk last week, especially on

Survey scheduled for Friday and the Union Budget on February 28.

Oscillators in the daily chart have risen from

It was another strong weekly close for the global benchmarks. Many indices in Europe and the

mood among the global investing fraternity.

As mentioned earlier a strong close below 15



the days that market declined. The NSE derivative volume spiked to Rs 1,90,000 crore. Index put call ratio is moving higher as traders once more veer towards

deeply oversold zone to a neutral region. Weekly oscillators continue in bearish zone though there is a mild upward reversal. The inference is that though the short-term risk

level is significant since it occurs at 38.2 per cent Fibonacci retracement of the slide from 21,108-peak. Presence of the 200-day moving average at 18,772 also adds to the



US went on to new multi-year highs while those in emerging markets etched strong gains. Risk appetite appears to be back with full force once again with the dollar declining and commodities and riskier equity segments moving higher. All the three major European benchmarks - CAC, DAX and FTSE went on to close at 33-month highs. Many Asian benchmarks that were reeling under selling pressure since January also registered small upticks. But it is difficult to know if this rally will sustain given China's hike

will mark the beginning of yet another wave of the bull market. Dow marked another multi-month closing high, closing at 12,391. This index is in a parabolic up-move since December with only one negative weekly close in between. If we extrapolate the move from March 2009 low, the first long-term target is 12,573. The peak at 13,132 formed in May 2008 would be the next resistance. Close below 11,800 is needed to signal the reversal of the medium-term uptrend in this index.



Madhav Ranade
(M) 09371002943 or
email :
sumamura@dataone.in

Trading levels 21st / 25th February 2011

Last week we finally saw the emergence of the PRE-BUDGET RALLY. Although we gave up some gains in the last two hours on Friday, we did manage about 300 nifty points gain from the lows hit during this down- leg.

I feel we still have a potential to hit 5700 on the budget eve but we have a crucial F&O expiry to go thru before that. It can be a very volatile settlement this time as both the bulls and bears will try to seize control just before the budget on Monday.

The result season is over and the performance should be termed as a shade below par. That has raised serious doubts about the 1250+ EPS projections for Sensex

fiscal 2012. It could come a full 100 points lower and that will hurt annual Sensex projections seriously.

There is some talk of withdrawal of stimulus on selective basis and the corporate honchos have already started making noise about it. I think the FM has no choice as he has to be seen doing something for the masses.

The PM's press conference has sent wrong signals to the FIs as he is looking extraordinarily weak now. That raises some serious doubts about further reforms.

Keep looking for the list of ten prominent stocks where I think there is a possibility of

substantial move in the coming week. The list will be on my website www.sumamura.com before Monday morning opening bell. Keep watching my website www.sumamura.com closely for further inputs.

My website will become paid website by first week of February 2011. Please remember CAPITAL is always scarce and needs to be respected. I am available on yahoo messenger on most of the trading days and you can add me on your yahoo messenger. My yahoo id is madhavrana1 Please call me if you have any doubts or you need levels for some other stock. I am available on 09371002943 or on sumamura@dataone.in

BSE Indices

posn trading lvls stock / index	go	date entry	21st / 25th feb 2011 targets	stoploss
BSE SENSEX	short	18230	18090/17930/770/610	18330
	long	18330	18550/790/19030	18230
BSE auto index	short	8740	x	8800
	long	8800	x	8740
BSE capital goods	short	13170	x	13260
	long	13260	x	13170
BSE FMCG index	short	3290	x	3330
	long	3330	x	3290
BSE health index	short	5920	x	5975
	long	5975	x	5920
BSE metal index	short	15935	x	16065
	long	16065	x	15935
BSE oil & gas INDEX	short	9320	x	9420
	long	9420	x	9320
BSE PSU index	short	8440	x	8520
	long	8520	x	8440
BSE realty index	short	2056	x	2088
	long	2088	x	2056

comodities

COMMODITY	WEEKLY	LEVELS	21ST / 25TH FEBRUARY 2011	UNIT
TYPE	GO	ENTRY	TARGETS	STOPLOSS
GOLD	SHORT	1380	1363/46/29/12	1397
	LONG	1397	1414/31/48	1380
SILVER	SHORT	32.87	32.67/32.37/32.07/31.77/31.47/31.17	33.27
	LONG	33.27	33.47/33.77/34.07/34.37	32.87
CRUDE	SHORT	86.1	82.25/84.4/83.55/82.7	86.95
	LONG	86.95	87.8/88.65/89.5/90.35	86.1
COPPER	SHORT	4.49	4.42/4.35/4.28	4.525
	LONG	4.56	4.63/4.7	4.53
NATURAL GAS	SHORT	3.83	3.76/3.69/3.62/3.55	3.9
	LONG	3.9	3.97/4.04/4.11/4.18	3.83
SUGAR	SHORT	727	719/11/03/695	735
	LONG	735	743/51	727

World indices

world indices	weekly	levels	21st / 25th feb 2011	stoploss
index	go	entry	targets	
dow jones index	short	12270	12150/030/11910/790	12390
	long	12390	12510/630/750	12270
nasdaq composi	short	2830	2813/2796/79/62	2847
	long	2847	2864/81/98/2915	2830
s&p 500	short	1336	1322/08	1350
	long	1350	1364/78	1336
FTSE	short	6045	5995/945/895	6095
	long	6095	6145/95	6045
nikkei 225	short	10815	10730/645/560	10900
	long	10900	10985/11070/155/240	10815
australia ordinary	short	5015	4990/65/40/15	5040
	long	5040	5065/90/5115/40	5015
hang seng	short	23540	23320/100	23760
	long	23760	23980/24200/420	23540
shanghai composi	short	2903	2884/65/46/27	2922
	long	2922	2941/60/79/98	2903

Pranab Mukherjee addresses G-20 meet in Paris

The global recovery remains fragile, uneven and is fraught with significant downside risks arising from the volatility in exchange rates, high commodity prices, persistently high unemployment and high inflation in some economies, and difficulties in formulating medium-term fiscal consolidation plans.

Following is the text of Union Finance Minister's Interventions/remarks made during the First Session of G-20 Finance Ministers' and Central Bank Governors' Meeting in Paris on 18th February, 2011.

Since 2008 the G 20 process has been driven by the objective of arriving at coordinated responses to the challenges emerging out of an unprecedented global financial and economic crisis, and more recently of safeguarding the process of economic recovery. The global recovery remains fragile, uneven and is fraught with significant downside risks arising from the volatility in exchange rates, high commodity prices, persistently high unemployment and high inflation in some economies, and difficulties in formulating medium-term fiscal consolidation plans.

Nevertheless, the coordinated response in the aftermath of the global crisis, and the resultant recovery, even if it is not complete, has clearly demonstrated the merits of a coordinated approach. A new style of economic governance appropriate to a rapidly integrating global economy is being born.

Underpinning the effort to take forward the cooperation to address structural problems in the global economy has been the G20 Framework for Strong, Sustainable and Balanced growth. Our

leaders at the Seoul summit underscored the centrality of the MAP process and the need to enhance this multilateral process to promote external sustainability, by pursuing the full range of policies conducive to reducing excessive



imbalances and maintaining current account balances at sustainable levels. Persistently large imbalances are to be assessed against indicative guidelines in terms of their nature and the root causes of the impediments to adjustment, while remaining cognizant of national or regional circumstances.

At this juncture I would like to highlight a few key words in the leader's declaration at the Seoul summit. The focus was clearly on 'promoting external sustainability' within the spirit of multilateral cooperation. Our leaders were careful to recognise that such an exercise should focus on persistent and excessive imbalances.

I welcome the progress made so far by the G20 Framework Working Group in the difficult task of working towards an agreed set of indicators and towards framing guidelines for addressing persistent imbalances. I hope that the remaining differences would be ironed out during this meeting. I would like to emphasise that the task

of preparing guidelines, and the ensuing MAP process, should not be seen by members as one of fabricating an iron casket or a mould that would be used to shape country specific policies in a manner that one size would fit all.

The objective is clearly of arriving at a

consensus on a set of 'indicative' guidelines that could reduce excessive external imbalances. It would be difficult to realize our objective according to the agreed timelines if we cannot agree on indicators during this meeting. Therefore, I would strongly urge my colleagues at the table to reach a consensus on the indicators during today's deliberations.

I would like to emphasize that the Framework is a joint effort of the G 20 to arrive at a road map to deal with problem of global imbalances. A positive outcome is needed to provide a signal that the G 20 is serious on ensuring strong sustainable and balanced growth for the World economy and addressing structural problems in the global economy and that it is not simply a crisis-fighting forum.

We need to proceed in a spirit of multilateral cooperation, recognising that the guidelines arrived at are not only be in the interest of the global economy, but also in the interest of

Continue on11

DR. DIPESH GOHIL

Mo. 9727990980

veenmoney@gmail.com



NAME : NIFTY
 BUY ABOVE : 5453
 RES-1 : 5500
 RES-2 : 5555
 RES-3 : 5610
 SELL BELOW : 5453
 SUP-1 : 5320
 SUP-2 : 5210
 SUP-3 : 5150



NAME : BANK NIFTY
 BUY ABOVE : 10925
 RES-1 : 11200
 RES-2 : 11450
 RES-3 : 11710
 SELL BELOW : 10925
 SUP-1 : 10600
 SUP-2 : 10255
 SUP-3 : 9958



NAME : JINDAL SAW
 BUY ABOVE : 207
 RES-1 : 216
 RES-2 : 228
 RES-3 : 240
 SELL BELOW : 207
 SUP-1 : 199
 SUP-2 : 180
 SUP-3 : 166



NAME : JK CEM
 BUY ABOVE : 137
 RES-1 : 145
 RES-2 : 154
 RES-3 : 160
 SELL BELOW : 137
 SUP-1 : 129
 SUP-2 : 122
 SUP-3 : 112



NAME : BALRAMCHINI
 BUY ABOVE : 73
 RES-1 : 76
 RES-2 : 83
 RES-3 : 90
 SELL BELOW : 73
 SUP-1 : 69
 SUP-2 : 63
 SUP-3 : 55



NAME : BHARATFORGE
 BUY ABOVE : 318
 RES-1 : 326
 RES-2 : 340
 RES-3 : 352
 SELL BELOW : 318
 SUP-1 : 311
 SUP-2 : 302
 SUP-3 : 290



OUR PERFORMANCE

STOCKS	REC. PRICE	HIGH /LOW	TGT
NIFTY	5317	5599	3 TARGET ACHIEV.
BANKNIFTY	10462	11280	3 TARGET ACHIEV.
RELINFRA	617	576	2 TARGET ACHIEV.
ONGC	277	267	1 TARGET ACHIEV.
CAIRN	325	313	1 TARGET ACHIEV.
PNB	1033	1127	3 TARGET ACHIEV.

Invest in infra finance in developing nations: India to G20

India today pressed for investment of global surpluses into financing infrastructure in developing countries with the help of multilateral development banks (MDBs).

Expressing concern over the lack of physical and social infrastructure in developing and low income countries, India's Finance Minister Pranab Mukherjee said here that a high level panel on infrastructure financing being set up under the G20 Development Agenda could focus on this issue.

The panel could work in a manner in which "global surpluses could be productively channeled into financing infrastructure investment in developing countries through the modalities of MDBs," he said.

Addressing a gathering of BRICS (Brazil, Russia, India, China and S Africa) finance ministers on the sidelines G20 meeting, Mukherjee said the major economies should stand committed to ensure sufficient resources for MDBs.

To improve its own infrastructure, India is

seeking an investment of USD one trillion during the 12th Five Year Plan (2012-17) from internal and global resources.

Mukherjee also invited South Africa to join a BRIC study regarding where the world economy would be in the near future and the role of BRICS countries in it.

With South Africa joining the BRIC, the club of four fastest growing economies, has now become BRICS.

The BRICS aims at submitting the report at their next summit scheduled to be held in Beijing in April.

Wall Street ends higher again

The S&P 500 on Wednesday marked the doubling from its bear-market bottom two years ago.

US stock benchmarks closed at fresh multi-year highs on Thursday, as investors welcomed a couple of encouraging economic reports even as tensions continued to mount in West Asia.

Gaining for a second consecutive day, the Dow Jones Industrial Average closed up 29.97 points, or 0.24%, at 12,318.14, with 20 of its 30 components ending higher. It was the average's highest close since June 5, 2008.

The S&P 500 Index gained 4.11 points, or 0.31%, to 1,340.43, with materials and energy performing best. Financials were the only sector to fall among its 10 industry groups. It was the index's highest close since June 19, 2008.

The S&P 500 on Wednesday marked the doubling from its bear-market bottom two years ago.

The Nasdaq Composite Index closed up 6.02 points, or 0.2%, to 2,831.58, its highest close since Oct. 31, 2007.

For every 11 stocks declining, 19 gained on the New York Stock Exchange, where 882 million shares traded. Composite volume neared 3.9 billion, roughly half the daily count of shares traded on average during February 2010.

Stocks had opened lower after reports said that both inflation and the count of weekly filings for unemployment benefits rose more than anticipated, but scaled back on losses after a gauge of manufacturing activity published by the Philadelphia Federal Reserve Bank

jumped more than expected.

While stocks may take a breather in coming weeks, the trend is likely to remain positive until the Fed pulls the plug on its quantitative easing.

All three of the major indexes finished the session at their highest levels in more than two years for a second day on Thursday.

The dollar rose modestly against the Japanese yen, the British pound, and the euro.

Gold futures for April delivery rose \$10 to settle at \$1,385.10 an ounce. Oil for March delivery gained \$1.37 to settle at \$86.36 a barrel.

The consumer price index (CPI) for January rose 0.4% month-to-month seasonally adjusted, compared to expectations of a 0.3% increase. The core CPI -

Continue on11

THE IPO GRADING AND LISTING ONLY AT BSE, ARE THE OTHER FACTORS WHICH DISCOURAGES INVESTMENT.

FINEOTEX CHEMICAL LIMITED

Incorporated in 2004, Fineotex Chemical Limited is an ISO 9001:2000 certified Company engaged in business of Specialty Chemicals and Enzymes

AVOID ment Industry, Construction Industry, Leather Industry, Water Treatment Industry, Agrochemicals, Adhesives and others. FCL manufactures over 100 products for various In-

FCL major customers include Clariant Chemicals India Limited, Pidilite Industries Limited, Croda Chemicals India (P) Limited (formerly ICI India Limited), Rashtriya Chemicals & Fertilizers

FINEOTEX CHEMICAL LIMITED

Issue Open: Feb 23, 2011 to Feb 25, 2011

Issue Type: Book built issue

Issue Size : 4,211,160

Rs. 25.27 - 30.32 Crore

Face value of the share: **Rs.10**

Offer price : Rs. 60 - Rs. 72 Per Equity Share

Minimum Shares : 90 Shares

Manimum Subscription : Rs. 6,480

Miximum Shares : 2700 Share

Maximum Subscription : Rs. 194400

Promoter :

1. Mr. Surendra Kumar Tibrewala,
2. Mr. Sanjay S. Tibrewala,
3. Mrs. Kanaklata S. Tibrewala
4. Ms. Ritu S. Tibrewala,

Registered Office :

42 & 43, Manorama Chambers,
S. V. Road,
Bandra (West), Mumbai-400050
Phone: +91-22-26559174 / 75
Fax: +91-22-26559178

Email: ipo@fi neotex.com

Website: http://www.fi neotex.com

Registrar

Bigshare Services Pvt. Ltd
Bigshare Services Pvt. Ltd.E-2,
Ansa Industrial Estate,Saki-Vihar Road,
Sakinaka,Mumbai - 400 072.
Phone: +91-22-2847 0652
Fax: +91-22-2852 5207

Email: fclipo@bigshareonline.com

Website: http://www.bigshareonline.com

Lead Managers:

1. Indbank Merchant Banking Services Limited
Cheque Drawn In Favour Of
"Escrow Account - FCL Public Issue - R" For
Retail Bidders

Listing : BSE

OBJECTS OF THE ISSUE:

The objects of the Issue are to:

1. Setting up of Manufacturing facility for production of specialty chemicals;
2. Setting up of Sales Office in Mumbai;
3. Margin Money for Working Capital;
4. Meeting Public Issue Expenses;
5. General Corporate Purpose.

CREDIT RATING GRADE

CARE Limited has assigned an IPO Grade 2 to Fineotex Chemical Ltd IPO. This means as per CARE, company has 'Below Average Fundamentals'. CARE assigns IPO grading on a scale of 5 to 1, with Grade 5 indicating strong fundamentals and Grade 1 indicating poor fundamentals.

Fineotex Chemical produces and provides Specialty Chemicals and Enzymes to Textile & Gar-

menting facilities situated at Mahape in Navi Mumbai.

grading and listing only at BSE, are the other factors which discourages investment. **AVOID.**

I P O

AVOID SUBSCRIPTION.

SUDARGARMENTS
Sudar Garments Ltd Logo
Incorporated in 2002,

at Khalapur Taluka,
Raigad District,
Maharashtra with a built-up area of about,

launching shortly two more brands namely 'St. Paul' and 'Majesty'.

SUDAR GARMENTS LTD

Issue Open: Feb 21, 2011 to Feb 24, 2011

Issue Type: Book built issue

Issue Size : 9,088,000

Rs. 65.43 - 69.98 Crore

Face value of the share: **Rs.10**

Offer price : Rs. 72 - Rs. 77 Per Equity Share

Minimum Shares : 81 Shares

Manimum Subscription : Rs. 6,237

Miximum Shares : 2592 Share

Maximum Subscription : Rs. 199584

Promoter : Mr. Murugan Muthiah Thevar.

Registered Office :

117, First Floor, Vardhaman Market,
Sector - 17 , Vashi,
Navi Mumbai - 400 703
Phone: 022 27800706/27880994
Fax: 022 27889239

Email: ipo@sudargarments.com

Website: http://www.sudargarments.com/

Registrar

Link Intime India Private Ltd,
C-13 Pannalal Silk Mills Compound,
LBS Marg, Bhandup West, Mumbai 400078
Phone: +91-22-25963838
Fax: +91-22-25946969

Email: sul.ipo@linkintime.co.in

Website: http://www.linkintime.co.in

Lead Managers:

1. Indbank Merchant Banking Services Limited
Cheque Drawn In Favour Of

"Escrow Account - Sudar - R" For Retail Bidders

Listing : BSE,NSE

Sudar Garments Limited is 29,626.30 Sq. Mtr. having a leading manufacturer ing a combined capacity and exporter for of producing 1,66,667

OBJECTS OF THE ISSUE:

Expansion of the existing apparel manufacturing unit 26.29cr
Working Capital Requirement 25.00cr
Setting up Retail Outlets and for Brand Building 5.90cr
Meeting General Corporate Expenses

CREDIT RATING GRADE

CRISIL has assigned an IPO Grade 1 to Sudar Garments Ltd IPO. This means as per CRISIL, company has 'Poor Fundamentals'. CRISIL assigns IPO grading on a scale of 5 to 1, with Grade 5 indicating strong fundamentals and Grade 1 indicating poor fundamentals.

readymade garments specialized in elegant Shirts, pieces of shirts, dress, pants, tops, skirts, and

FINANCIAL

	RS IN CRORES		
	08	09	10
TOTAL INCOME	8.89	20.89	53.97
PAT	0.28	0.59	4.11
EPS	0.68	1.31	9.00

Trousers and wide range of apparel for Men, Women & Kids. Sudar Garments has its own manufacturing setup

denims per month. The company is presently manufacture under its own brand name "Glory to Glory" and will be

not have a strong second line of management to match the growing business. While the company has taken steps to strengthen its team, the efficacy of the same will be seen only over the medium term.

The grade is further impacted by a weak business risk profile due to the company's limited experience in retail business, the absence of long-term contracts and high depen-

Continue on16

SUDAR GARMENTS LTD

Cont. from Pg. 15

dence on few buyers for a bulk of its revenues.

FINANCIAL, VALUATION AND RECOMMENDATIONS:

At Rs 72-77, the company is demanding a valuation of 24x on its FY11 earnings, on the post issue

capital of Rs 18.54cr, which is very expensive. Well established companies in the segment, like Kewal Kiran Clothing, Mandhana Industries are trading around 12 PE. More over garment manufacturing is highly competitive sector with not so

attractive margins. The company's margin which was around 3% in the year 2009 has jumped to 8% in the year 2010. This kind of improvement in margins, before the IPO has to be taken with a pinch of salt. AVOID SUBSCRIPTION. The BRLM - Ashika Capi-

structure Management Services

IT Security Consulting Services

RISK FACTOR

Dependence on few customers. Top five customers contributed approximately 80% of the income from operations. Currency fluctuation. The company generates a significant portion of the revenues in U.S. Dollars and other foreign currencies, and significant portions of the expenses are incurred in Rupees.

OUT LOOK

Greater focus on cost and operational efficiencies in the recessionary environment is expected to enhance global sourcing. There is huge potential for global outsourcing business.

Services and software segments are estimated to grow at 6.1 per cent to cross USD 1.2 trillion by 2012.

The worldwide BPO market is expected to grow at a CAGR of 11.9 per cent to reach USD 181 billion by 2012, while ITO market is expected to grow at a CAGR of 6.9 per cent and reach USD 275 billion by 2012

Domestic IT spending The liberalization of Indian economy, de-regulation of key sectors and progressive moves towards further integrating India with the global economy has been a key driver of increased IT adoption in the country. This is best reflected in the fact that

most indigenous players in telecom and banking, two key sectors with significant multinational corporation participation, have significantly upgraded their levels of IT adoption to offer best-in-class services comparable to those offered by the global competition and these two sectors together account for approximately 50-60 per cent of the domestic spend on IT services.

Domestic IT spending

The liberalization of Indian economy, de-regulation of

RECOMMENDATIONS:

Acropetal reported a net profit of Rs. 35.71cr on an operating income of Rs.

152.19cr in 2009-10, a substantial increase over the net profit of Rs. 18.92cr on an operating income of Rs. 97.1cr in 2008-09 (on consolidated basis). During the nine months ended December 31, 2010, the company reported an operating income of Rs. 148.13cr and a net profit of Rs. 28.41cr, on consolidated basis.

The company's track record of growth and

SUBSCRIPTION TO THE ISSUE IS RECOMMENDED.**ACROPETAL TECHNOLOGIES LIMITED**

Incorporated in 2001, Acropetal Technologies Ltd is mid-tier IT services and products firm which offers Information Tech-

gineering Design Services, Healthcare, and Energy and Environment sectors.

Acropetal offers Engineering Design Services to reduce product design cycle

services include concept design, product design & development, advanced analysis, reliability engineering and value engineering. Other services are product quality improvement, idea generation, product teardown, material cost out, product re-design, back office support to accomplish 2D Drawings, Data Conversion and 3D Modeling.

Acropetal Technologies headquartered in Bangalore, the silicon valley of India. They also have presence in Dubai, UAE, through subsidiary Vision Info Inc. Company intends to set up new Software Development Center cum Corporate Office in Bangalore and also expand its geographical presence in the US, UK, Middle east and South East Asia by setting up offices.

BUSINESS

Acropetal offers a broad spectrum of Engineering Design Services to reduce product design cycle time and costs. The portfolio of services includes concept design, product design & development, advanced analysis, reliability engineering and value engineering. Product quality improvement, idea generation, product teardown, material cost-out, product re-design, back office support to accomplish 2D Drawings, Data Conversion and 3D Modeling are the value added services.

Acropetal is currently working on the following competency based verticals:

Engineering Design Services
Healthcare Services
Enterprise & IT Services
Energy & Environment Services
IT Infra-

gineering Design Services, Healthcare, and Energy and Environment sectors.

Acropetal offers Engineering Design Services to reduce product design cycle

services include concept design, product design & development, advanced analysis, reliability engineering and value engineering. Other services are product quality improvement, idea generation, product teardown, material cost out, product re-design, back office support to accomplish 2D Drawings, Data Conversion and 3D Modeling.

Acropetal Technologies headquartered in Bangalore, the silicon valley of India. They also have presence in Dubai, UAE, through subsidiary Vision Info Inc. Company intends to set up new Software Development Center cum Corporate Office in Bangalore and also expand its geographical presence in the US, UK, Middle east and South East Asia by setting up offices.

BUSINESS

Acropetal offers a broad spectrum of Engineering Design Services to reduce product design cycle time and costs. The portfolio of services includes concept design, product design & development, advanced analysis, reliability engineering and value engineering. Product quality improvement, idea generation, product teardown, material cost-out, product re-design, back office support to accomplish 2D Drawings, Data Conversion and 3D Modeling are the value added services.

Acropetal is currently working on the following competency based verticals:

Engineering Design Services
Healthcare Services
Enterprise & IT Services
Energy & Environment Services
IT Infra-

ACROPETAL TECHNOLOGIES LTD

Issue Open: Feb 21, 2011 to Feb 24, 2011

Issue Type: Book built issue

Issue Size : 18,888,888

Rs. 170 Crore

Face value of the share: Rs.10

Offer price : Rs.88 - Rs. 90 Per Equity Share

Minimum Shares : 60 Shares

Manimum Subscription : Rs. 5,400

Miximum Shares : 2220 Share

Maximum Subscription : Rs. 199800

Promoter : Mr.D.Ravi Kumar,

Registered Office :

2/10, 3rd Floor, Ajay Plaza,

1st Main, N.S. Palya, Bannerghatta Rd,

Bangalore - 560 076, Karnataka

Phone: +91-80-4155 9501/02

Fax: +91-80-2678 9553

Email: ipo@acropetal.com

Website: http://www.acropetal.com

Registrar

Sharex Dynamic (India) Pvt Ltd

Unit 1, Luthra Ind. Premises,

Safed Pool, Andheri - Kurla Road,

Andheri (East), Mumbai - 400 072

Phone: +91- 22 - 2851 5606

Fax: +91 - 22 - 2851 2885

Email: atl.ipo@sharexindia.com

Website: http://www.sharexindia.com

Lead Managers:

1. Saffron Capital Advisors Private Limited

Listing : BSE, NSE

OBJECTS OF THE ISSUE:

The objects of the Issue are:

1. To finance the funds required for potential acquisitions;
2. To set up a Software Development Center cum Corporate Office at Hosur Road, Bangalore;
3. Expansion & Establishment of overseas offices;
4. Part Repayment of Term Loans;
5. Additional Working Capital requirements;
6. General Corporate Purposes;
7. Meeting public Issue expenses.

nology (IT) outsourcing services to clients in En-

time and costs. The ser-

the following competency

CREDIT RATING GRADE

ICRA has assigned an IPO Grade 3 to Acropetal Technologies Ltd IPO. This means as per ICRA, company has 'Average Fundamentals'. ICRA assigns IPO grading on a scale of 5 to 1, with Grade 5 indicating strong fundamentals and Grade 1 indicating poor fundamentals

FINANCIAL

RS IN Lakhs

	08	09	10	31st dec 2010
TOTAL INCOME	5,970.03	9,280.49	10,808.51	10,637.45
PAT	1,306.37	1,658.58	1,955.09	1813.26
EPS	0.68	1.31	9.00	

key sectors and progressive moves towards further integrating India with the global economy has been a key driver of increased IT adoption in the country. This is best reflected in the fact that most indigenous players in telecom and banking, two key sectors with significant multinational corporation participation, have significantly upgraded their levels of IT adoption to offer best-in-class services comparable to those offered by the global competition and these two sectors together account for approximately 50-60 per cent of the domestic spend on IT services.

FINANCIAL, VALUATION AND REC-**GOVT MAY MISS DISINVESTMENT TARGET OF RS. 40,000 CR FOR FY'11**

The government may miss the target of garnering Rs. 40,000 crore through disinvestment as SAIL's follow-on public offer is now expected to hit the market in the next fiscal due to volatile stock market.

"No, no... we will wait. There is very less time left in this fiscal. We are looking at market conditions," steel minister Beni Prasad Verma said when asked whether SAIL FPO would hit the market before 31 March.

Moreover, Steel Authority of India Ltd's (SAIL) public offer is slated to hit the market only after ONGC's share sale and this may leave little resources in the hands of investors to subscribe to two big-ticket disinvestment issues.

The Government has raised over Rs. 22,000 crore through selling equities in the PSUs so far and has been banking on issues of ONGC and SAIL to meet its target of raising about Rs. 40,000 crore through stake sale.

The ONGC issue, likely to open on 15 March, is expected to fetch about Rs. 13,000 crore, while SAIL share sale was planned to garner up to Rs. 8,000 crore.

The steel ministry feels that amid highly volatile stock markets, time available for the SAIL's share sale is very limited in this financial year as it is lined up post ONGC FPO.

"We are ready... the issue will come as market conditions improve but 15-20 days time will be required before going to the market," Steel Secretary P K Misra had said earlier.

Since beginning of 2011, the Bombay Stock Exchange benchmark Sensex has gone down by about 11.42% due to a host of national and international issues like 2G Spectrum scam and Egypt crisis.

The bearish run has also caused the SAIL scrip to decline by about 14.79% since then.

The company shares closed at Rs. 160.15 a piece on Friday last week

against a close of Rs. 187.95 on 3 January this year.

In this fiscal, the government raised over Rs. 15,000 crore by listing Coal India on the bourses, while issues of Powergrid Corporation, MOIL, Engineers India, Shipping Corporation and Satluj Jal Vidyut Nigam Ltd took the disinvestment proceeds to over Rs. 22,000 crore.

However, rise in crude oil prices scuttled the government plans of raising money through follow-on public offer of Indian Oil Corp and it has now been postponed indefinitely. Issue of Hindustan Copper, earlier scheduled for December, was also deferred due to volatility in the markets.

Last year, the government had raised about Rs. 25,000 crore by selling its stake in PSUs like Oil India, NTPC, NMDC among others. Finance Minister Pranab Mukherjee, in his budget speech of 2010, had raised the target to Rs. 40,000 crore.

In coming week market may be volatile & 500 point up-down so soon

Both the indices, Sensex and Nifty, snapped its three week losing streak to settle this week on a buoyant note with a massive gain of 483 points led by positive factors like easing inflation and global cues. Smart rise in banking, metal and capital goods stocks helped the index to close with 2.72% gain.

Asif Shaikh
Mo. : 09725050507
E-mail : yooza_143@yahoo.com

POINT LINK

The 30 share index, Sensex surges 482.91 points, or 2.72%, to 18,211.52 in the week ended Feb. 18, 2011. On the other hand, the broad based NSE Nifty climbed 148.95 points, or 2.81%, to 5,458.95 in the same period.

Mid-cap stocks gained 185.73 points, or 2.87%, to 6,661.65 in the week. While small-cap shares jumped 320.12 points, or 4.10%, to 8,128.91 during the week. Major gainers over the week in the sectoral indices were Bankex climbed 4.87%, Metal gained 4.02%, Capital Goods 3.93%, BSE Consumer Durables rose 3.40%, FMCG climbed 2.94%, and Auto went up

(6.34%), and Tata Power Company (5.67%) over the week. On the other hand D L F (5.96%), Reliance Communications (4.12%), Oil & Natural Gas Corporation (3.35%), Mahindra & Mahindra (2.57%), and Reliance Infrastructure (1.64%) were the biggest losers in the Sensex over

the week. Inflation eased mainly on concerns of further hike in interest rates. The general inflation declined to 8.23% in January 2011, from 8.43% in last month and the Finance Minister expressed hope that the overall inflation will come down to 7% by March end.

FII Selling: FII's continued to be net seller so far in this year 2011 for two reasons... Primary reason for FII's pulling out their investments from here is the strong economical recovery in U.S (We had given alert about this in our Diwali Special Article 2010 itself)... We expect it to continue for a while... Second and Sentimental

Leading Scams & briberies... The stock markets have been through a correction over the last couple of months due to concerns on the high inflation rate, monetary policy tightening and impact on the growth of industrial output mainly in the capital-intensive segments. The markets had a technical pull-back last week as some concerns eased on the global and domestic fronts, and also in anticipation of some positive announcements in the forthcoming Union Budget.

However, caution is advised in the markets as it is close to the Union Budget announcement. As in the past, high volatility is expected in the markets in anticipation of the Budget, and as a reaction to the announcements made. Although there was a

technical pull-back rally in the markets last week, many blue-chip stocks are still available at attractive levels for investors looking at a long term.

The economy is expected to post a healthy growth rate of over 8.5 percent in the current fiscal, and the expectations are it will continue to maintain the growth rate in the next fiscal year as well despite the monetary policy tightening. These are some strategies for various categories of investors: Investors planning to invest now The stock markets have corrected over the last few weeks and are down by almost 12 percent from their peak levels. Many blue-chip stocks are trading at 20 to 30 percent below their highs,

and therefore offer good investment opportunities. However, you should not take investment decisions in a hurry. It is advisable to follow the stock markets for some time



and do some homework to identify stocks and ideal price levels before taking investment decisions.

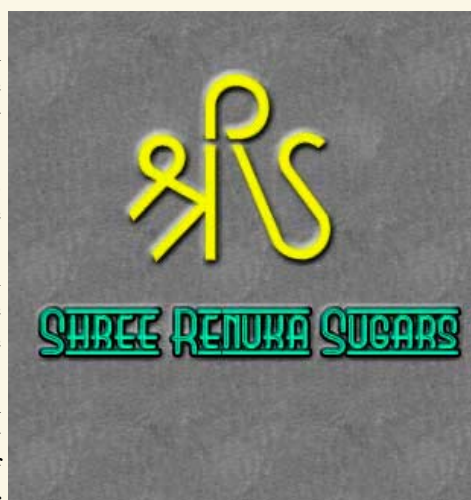
Since the markets are quite volatile, it is advisable to accumulate selected stocks in smaller lots at regular intervals in order to get a good average entry price. You should avoid getting sentimental in the stock markets and define profit/loss targets for your

Therefore, investors should track the news and developments related to stocks, sectors and the overall market closely. Those who have invested in the markets with a

long-term horizon (couple of years or more) should also look at the market trends and developments. Since the sentiment is

bullish worldwide, it is advisable to maintain your current positions. However, a periodic review of the portfolio should be made from time to time, based on the current macroeconomic and business conditions, and quarterly results. Investors should take the necessary steps to make the required adjustments in their portfolios based on the macroeconomic conditions and company results. Long-term investors who cannot track the markets and related developments regularly would be better off investing their money in equity mutual funds.

In coming week investor see some volatility in market. The rail budget on 25 February & union budget on 28 February, & F/O expiry too in coming week. So be care full in next week. I



recommended some stock for Short & buy. Invest in level come out.

Parsvanath
Close (30.65)

In near term realty

sector may some pressure in the market so avoided Buy position in Realty sector company. Every jump sorts this sector. Sorts this stock with stop loss of around 33 for target of 28-25. if stock brake the 25 level it will come 20-18 level. So investor every high sort this stock. & book profit every decline.

Unitech
Close (34.20)

This Realty company ma be some further decline in near term. Unitech chart some give sort position in near term. If this stock close 32 will touch 25-22 level keep a stop loss of 37 around & sort this stock.

Renuka Sugar
Close (78.45)

Sugar sector company Shree Renuka Sugars has net profit of Rs 66.4 crore for the quarter ended December 2010 as against Rs 261 crore in same quarter the previous year. Consolidated net sales jumped to Rs 2,247 crore from Rs 1,429 crore. Interest cost increased to Rs 116.5 crore from Rs 29.4 crore (YoY). The better performer stock may come down side not huge or upside to long keep this stock on your radar for best buying. Keep stop loss of 75 and buy at cmp for target of 85-90 Rs.

DLF
Close (232.80)

Essentially if you see, the whole market has been weak and all the real estate stocks have been quite weak. DLF closed at about Rs 232, over the last two weeks has made an attempt to go back to about Rs 250-260 levels. But I would short at this level and probably any bounce because I think over a period of two-three days, it is poised to go down lower towards Rs 220-215 & may be he touch his 52 week low pries 214.85. If investor some problem from this any recommendation call or email for best buy Or best sell position.



2.67%. However, Realty dropped 2.24% during the week. Major gainers in 30-share index were Jindal Steel & Power (9.77%), Tata Steel (7.21%), State Bank Of India (6.60%), Bajaj Auto

Reason, they lost their belief when they came to know "The Law-Makers became Law-Breakers here in India" – When Many Politician's & Govt. Higher Official's names were screened in